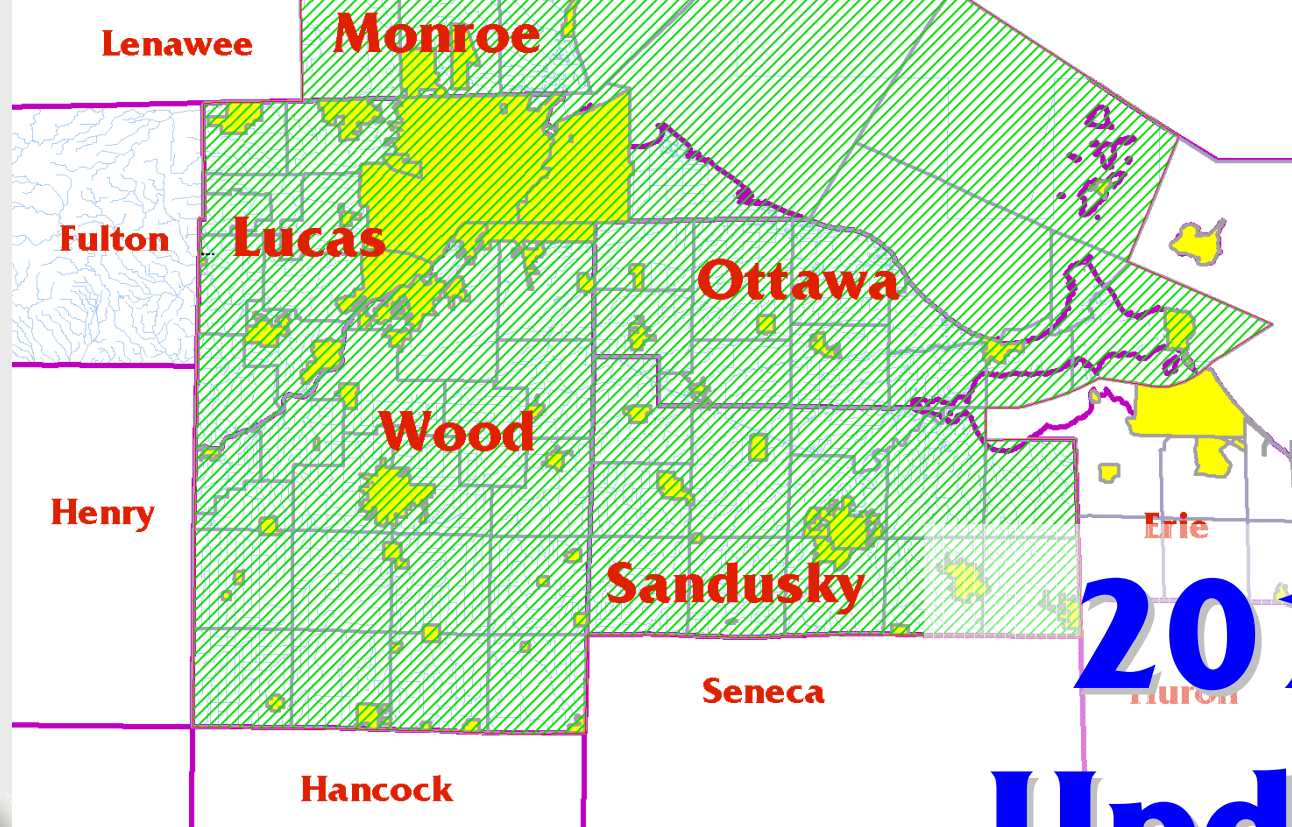


# TMACOG "208" Areawide Water Quality Management Plan



**2010  
Update**



# **Designation of TMACOG as the Areawide Agency**

- TMACOG is Areawide WQ Management Planning Agency
- Lucas, Ottawa, Sandusky, and Wood Counties in Ohio, and Bedford, Erie and Whiteford Townships of Monroe County, Michigan
- Originally certified 1980
- Kept current through updates



# AWQMP Chapters

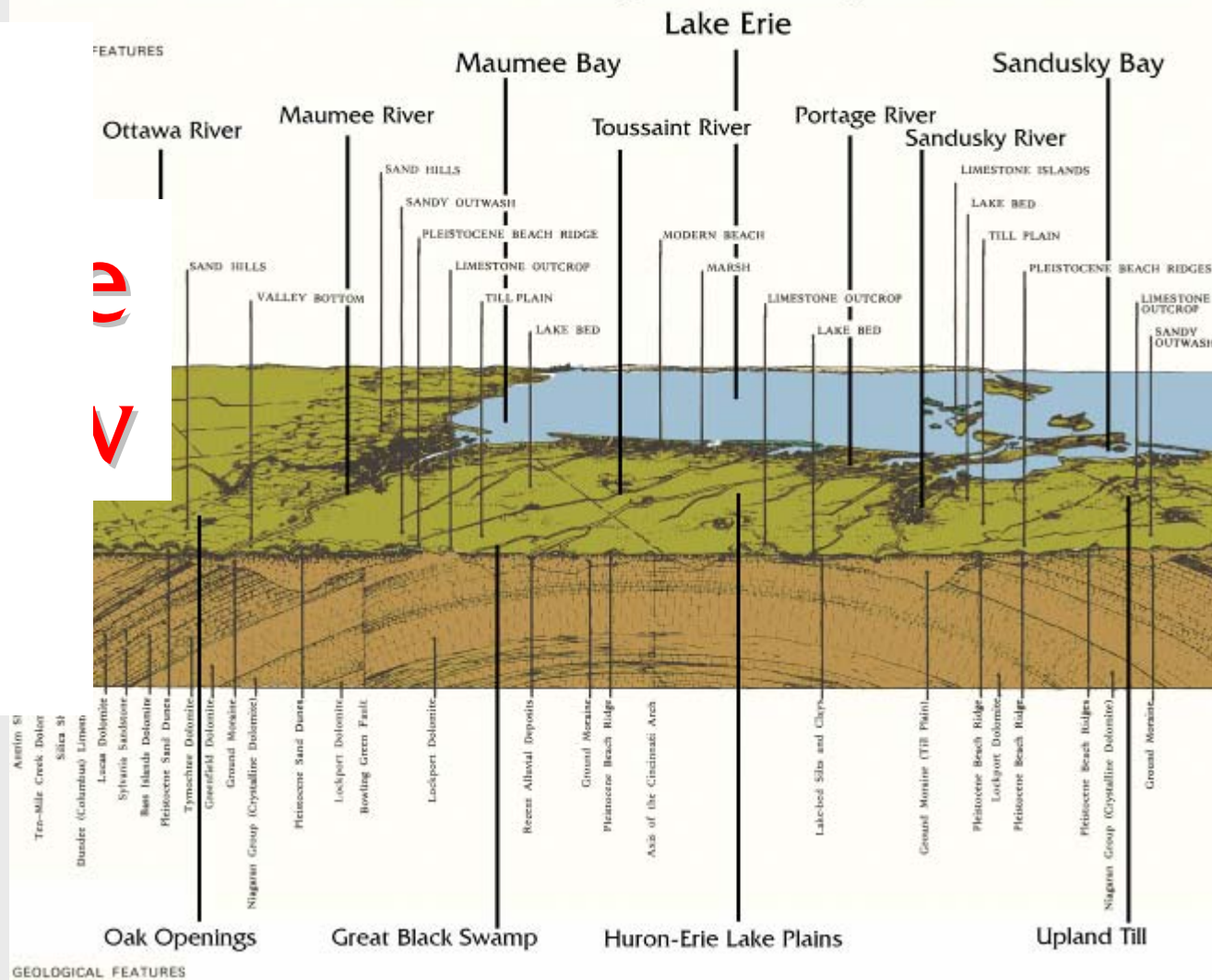
Chapter	Title	Last Adopted by TMACOG Board of Trustees
1	Areawide Overview	2008
2	Environmental Policies	2008
3	Water Quality Management	2008
4	Public Wastewater Treatment	2008
5	On-site Sewage Treatment	2008
6	Agricultural Runoff	2008
7	Urban Runoff	2008



# Chapter 1

- Sand Hills (Oak Openings)
- Lake Plain (Black Swamp)
- Uplands
- Lake Erie

**Aerial View of the TMACOG Region Showing Natural Features**



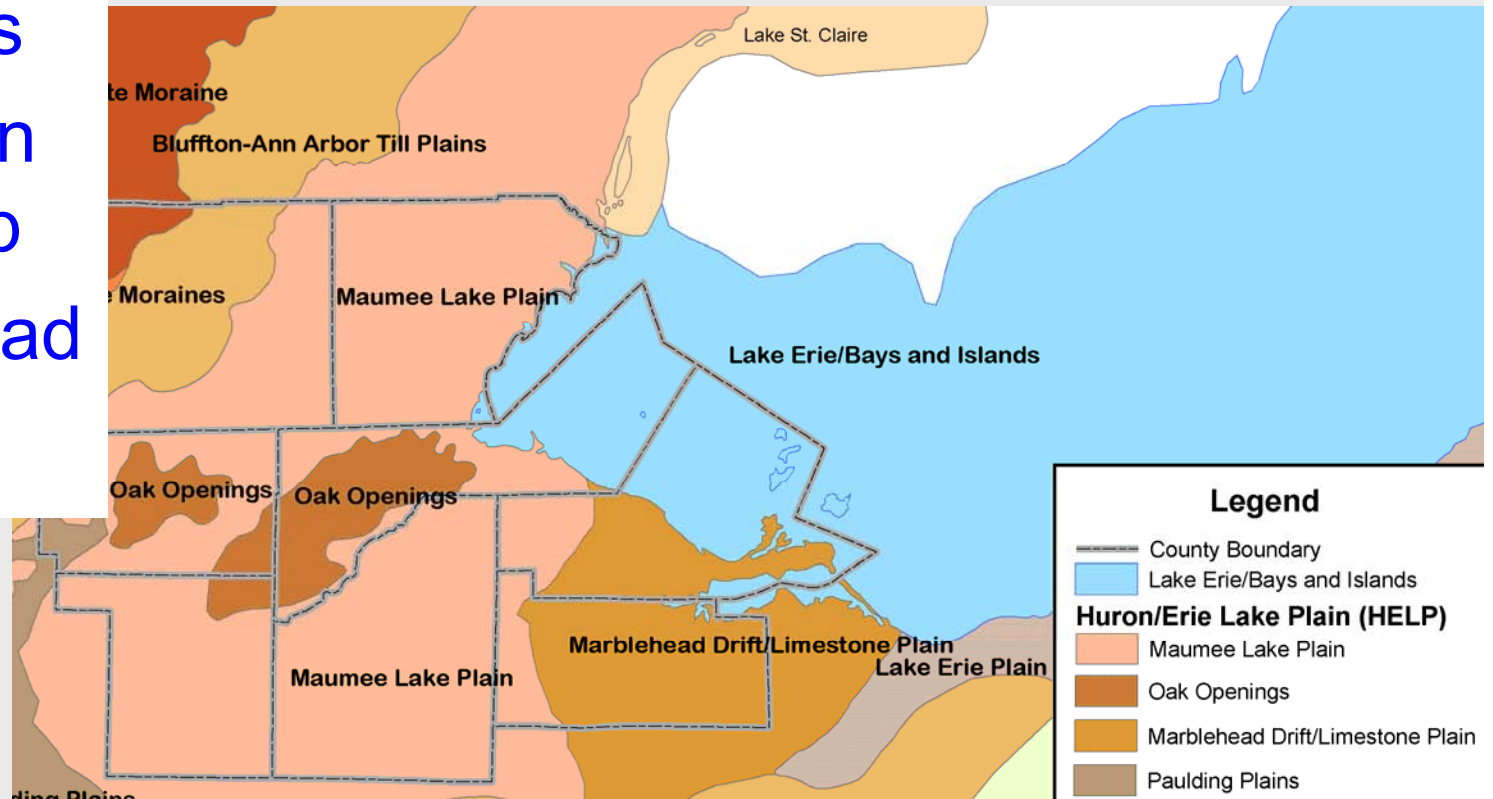
# Purpose

- “The Lay of the Land”
- Enough science and background to understand the rest of the 208 Plan
- A useful resource that explains the jargon
- The state of water quality in the region
- Legal background and requirements of a 208 Plan

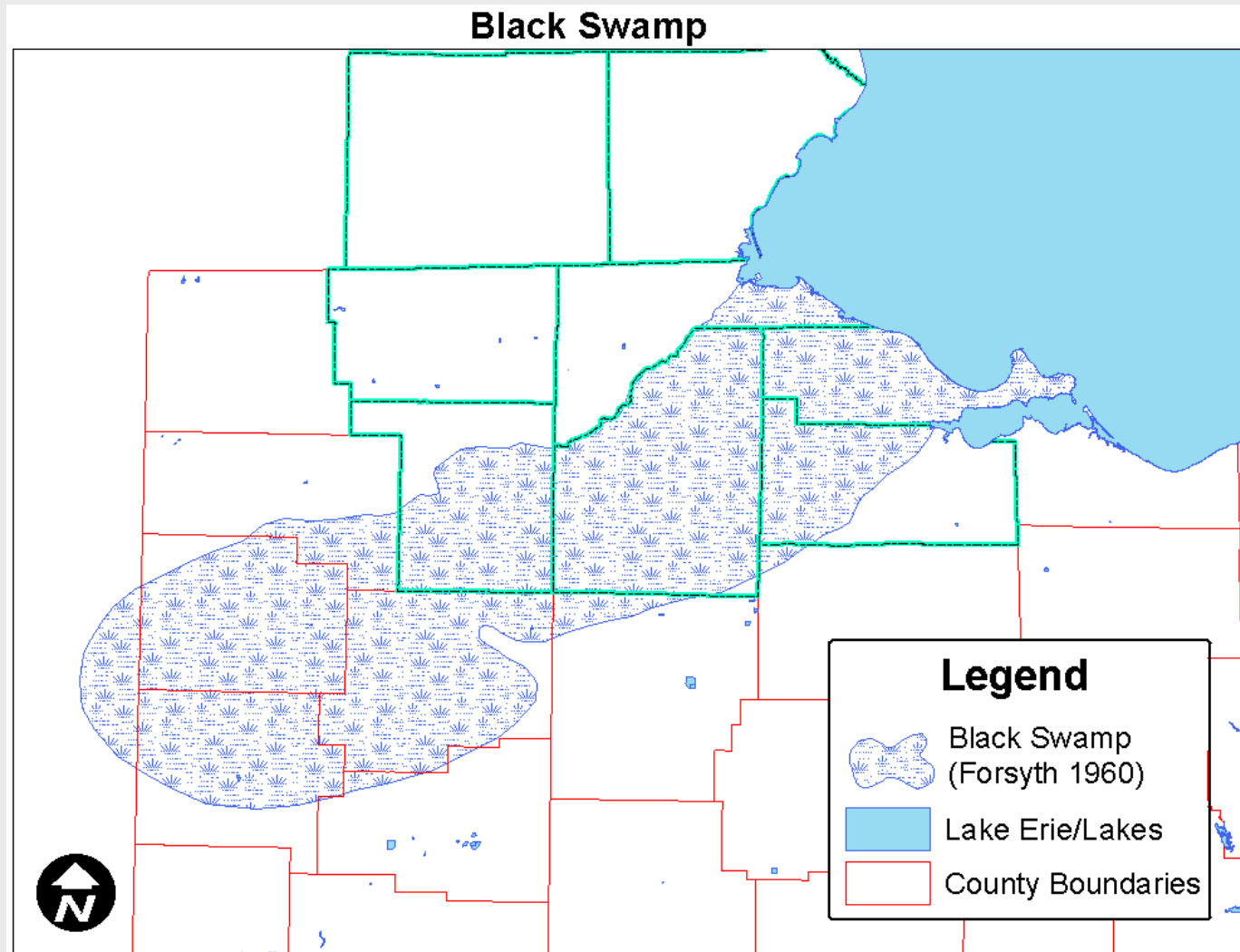


# Ecological Areas

- All "HELP"
- Oak Openings = Sand Hills
- Lake Plain = Swamp
- Marblehead = upland



# The Great Black Swamp



# Surface Water Quality

- Use designations
  - WWH
  - MWH
- How attainment is measured (indexes)
  - Aquatic life
  - Human Health
  - Recreation
  - Public Drinking Water



# OEPA Integrated Report Categories

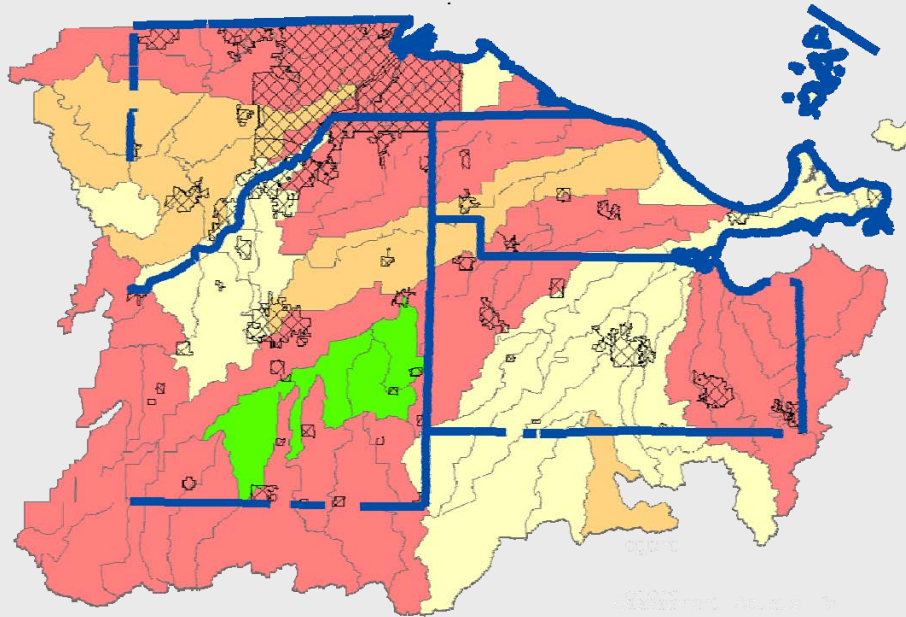
Table A-1. Category definitions for the 2010 Integrated Report and 303(d) list.

Category <sup>1</sup>		Subcategory	
0	No waters currently utilized for water supply		
1	Use attaining	h	Historical data
		x	Retained from 2008 IR
2	Not applicable in new (2010) Ohio system		
3	Use attainment unknown	h	Historical data
		i	Insufficient data
		x	Retained from 2008 IR
4	Impaired; TMDL not needed	A	TMDL complete
		B	Other required control measures will result in attainment of use
		C	Not a pollutant
		h	Historical data
		n	Natural causes and sources
		x	Retained from 2008 IR
		5	Impaired; TMDL needed
		h	Historical data
		x	Retained from 2008 IR

<sup>1</sup> Shading indicates categories defined by U.S. EPA; additional categories and subcategories are defined by Ohio EPA.



# Aquatic Life



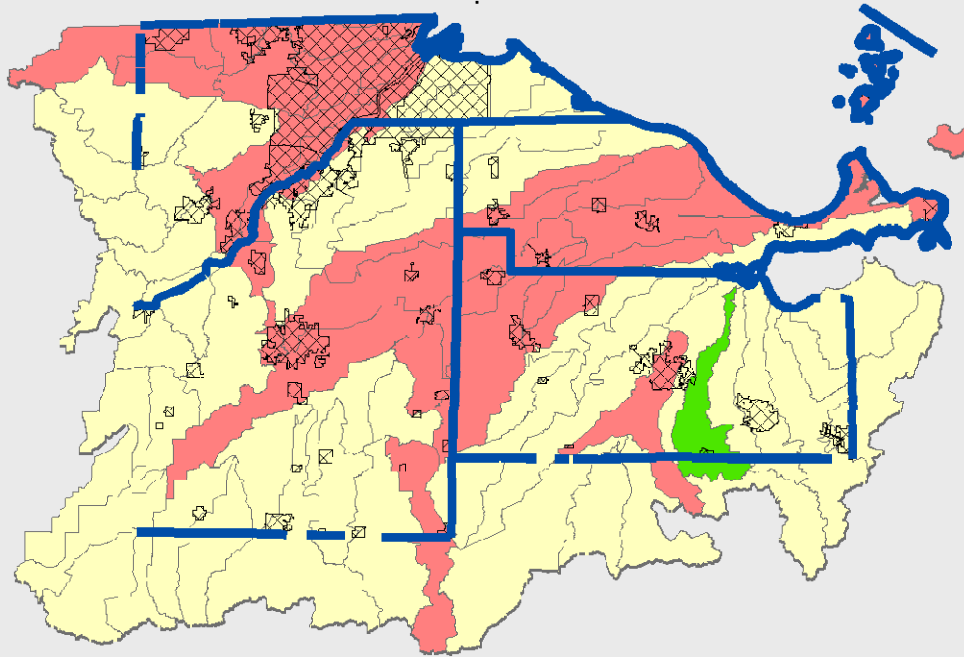
**Watershed Use Attainment  
Aquatic Life**



- Fish & macroinvertebrates
- Number & diversity
- Pollution tolerance
- Affected by land use, NPS
- More than half impaired



# Human Health



**Watershed Use Attainment  
Human Health**

Legend  
Municipalities  
Assessment - Human Health  
Human Health Attainment  
Attaining  
Unknown  
Impaired - IMLL Needed

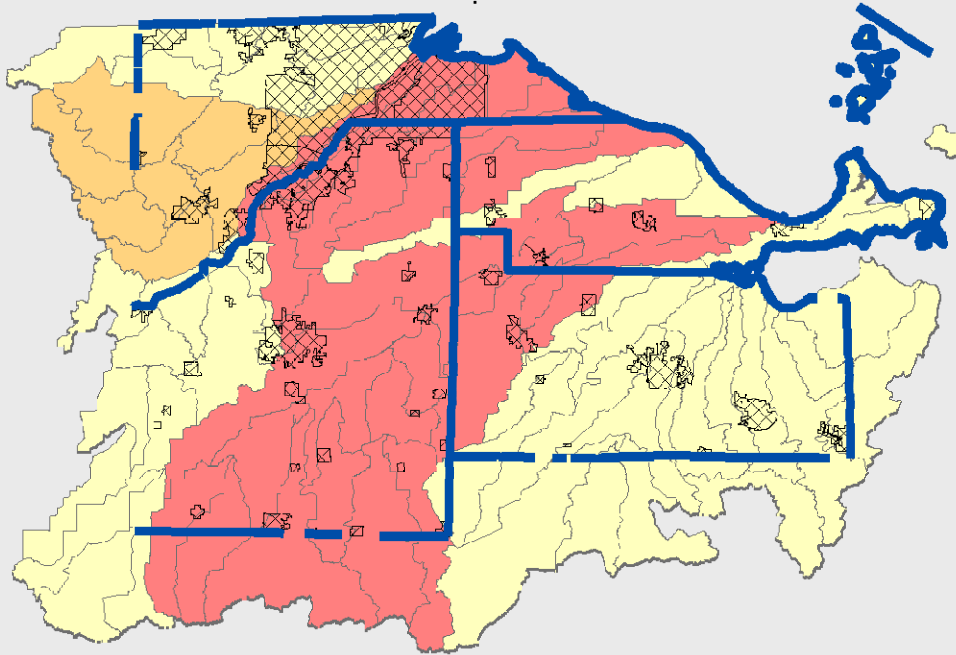


0 2.5 5 10 15 20 25 Miles



- Food chain impacts by toxics
- PCBs, mercury, DDT, chlordane, hexachlorobenzene, mirex
- About 1/3 impaired

# Recreation



**Watershed Use Attainment  
Recreation**



0 2.5 5 10 15 20 25 Miles

**Legend**

▣ Municipality

Assessment - Recreation

Recreation Attainment

Attaining

Unknown

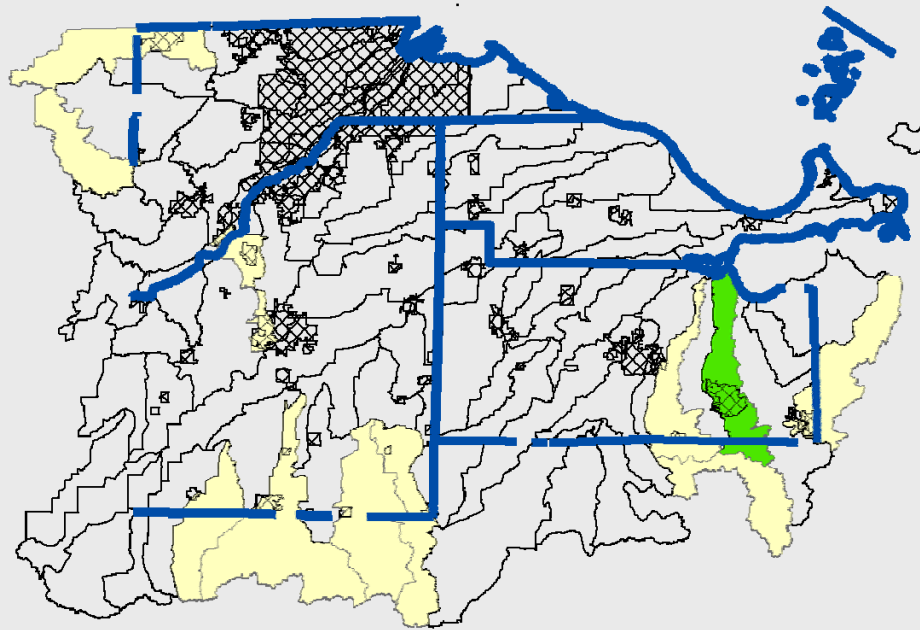
Impaired - TMDL not needed

Impaired - TMDL needed

- Swimming, boating, wading
- Primary and secondary contact
- Based on E. coli
- Septic systems, warm blooded animals
- About half impaired, half not assessed



# Public Drinking Water



## Watershed Use Attainment Drinking Water



0 2.5 5 10 15 20 25 Miles

### Legend

☒ Municipalities

Assessment - Drinking Water

Drinking Water Attainment

□ No Water Supply

■ Attaining

■ Unknown

- Use of stream as public drinking water supply
- Most watersheds n/a because no public surface water withdrawals
- One watershed in attainment
- Otherwise not assessed



# Advisories (example)

Water Body	Fish Consumption Advisory	Contaminants
Lake Erie	Limits on consumption of about a dozen fish species of one meal/month	PCBs; for rock bass, bullmouth bass, and largemouth bass – also mercury
Lake Erie	one meal every two months of channel catfish, carp over 27” long, and lake trout	PCBs
Lake Erie	one meal every two months of rock bass, brown bullhead, and largemouth bass –	PCBs and/or mercury
Lake Erie tributaries: Lucas, Ottawa, Sandusky Counties	Steelhead Trout, one meal / month	PCBs
Maumee River	Limits on consumption of Freshwater Drum, Smallmouth Bas to one meal / month	PCBs
Maumee River	Limits on consumption of channel catfish of one meal / 2 months	PCBs
Maumee River	Limits on consumption of Smallmouth Buffalo to 1 meal / month	PCBs, mercury
Maumee River	Limits on consumption of Common Carp, Flathead Catfish to one meal / month	Mercury



# Chapter 2

## Environmental Policies



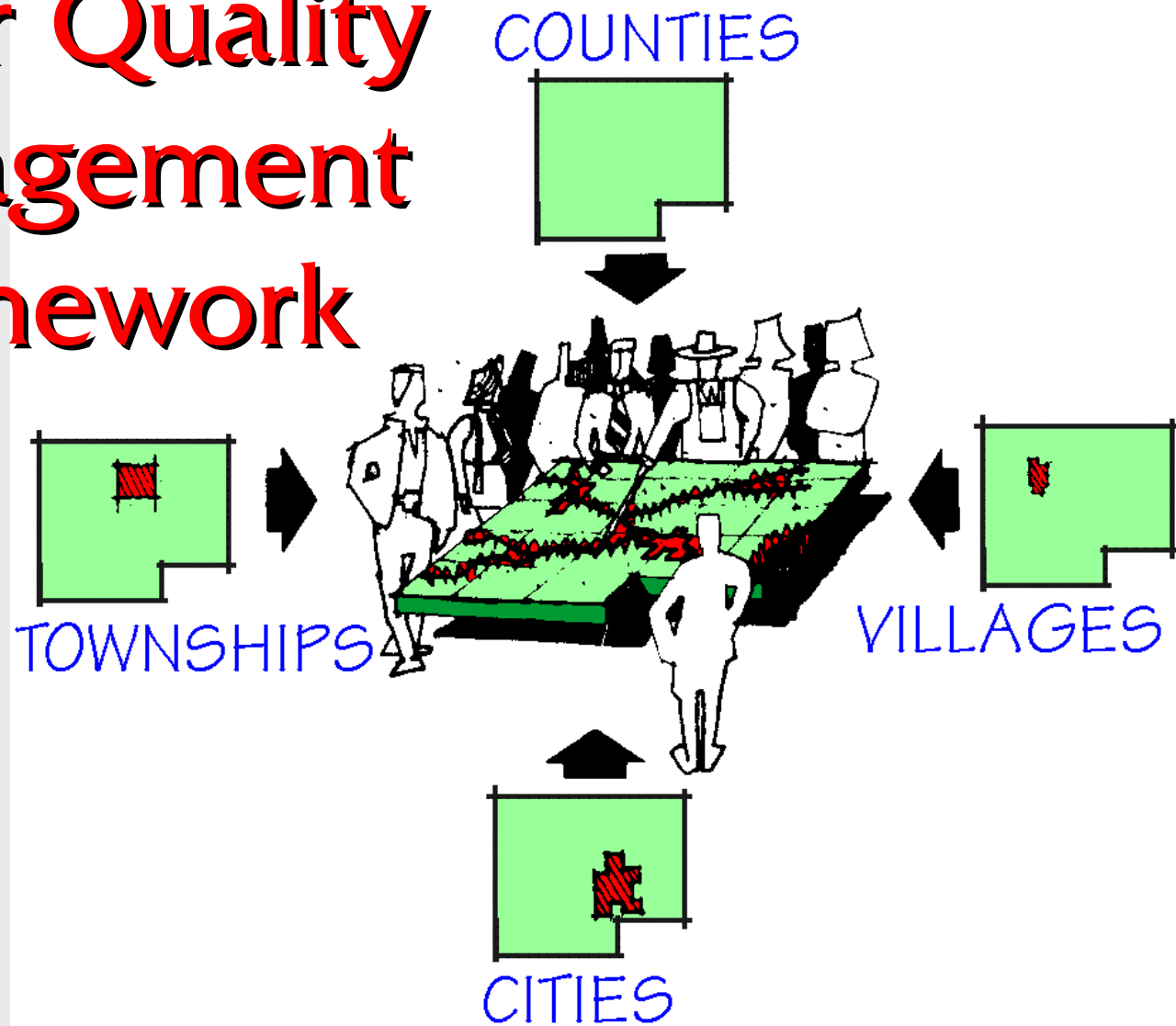
Adopted by TMACOG Board  
of Trustees in 2008.

No changes proposed.



# Chapter 3

## Water Quality Management Framework



# DMAs

## Designated Management Agencies

- Government agency with responsibility under the Clean Water Act
- Government agency that:
  - Operates a sanitary sewer, or
  - Operates a wastewater treatment plant, or
  - Has an EPA Phase I/Phase II Stormwater Permit, or
  - Is a Local Health District, or
  - Is a county Soil & Water Conservation Dist
- 86 in our region



# Who are DMAs?

County	Designated Management Agency	Agriculture	Stormwater	Sanitary Sewerage or Onsite
Sandusky	Village of Gibsonburg			
Sandusky, Seneca	Village of Green Springs			•
Sandusky	Village of Helena			•
Sandusky	Village of Lindsey			•
Sandusky	Village of Woodville			•
Sandusky	Sandusky County Health Department			•
Sandusky	Sandusky Soil and Water Conservation District	•		
Wood	Wood County		•	•
Wood	Northwestern Water and Sewer District			•



# DMA Responsibilities

- Using Fremont FPA as an example
  - *Fremont: Owns and operates the wastewater treatment plant, and sanitary sewers within its corporate limits.*
  - *Sandusky Township Sewer District: Owns and operates local collector sanitary sewers within its boundaries.*
  - *Sandusky County: Owns and operates sanitary sewers in unincorporated areas outside the Sandusky Township Sewer District. In addition, Sandusky County operates and maintains an interceptor sewer and pump stations within the Sandusky Township Sewer District. The District's local collector sewers discharge to the interceptor sewer, which conveys wastewater to Fremont.*



# Chapter 3 Updates

- Delete Sylvania Township Sewer District  
— Lucas County assumes responsibilities to provide sanitary sewerage service in the Township



# Chapter 3 Also Contains

- TMACOG's role as planning agency
- Role of TMACOG Environmental Council & Board of Trustees in 208 approval
- Amendment process
  - Contact TMACOG
  - TMACOG will facilitate discussion with DMA(s)
  - Decision made by TMACOG Board



# Chapter 4

## Public Wastewater Treatment



# Chapter 4 Covers

- CWA & ORC on areawide WQ mgt
- Inflow & Infiltration (I/I)
- Anti-degradation
- Pre-treatment
- Package Plants
- Sludge management
- DMA roles
- Definition of FPAs and how they work
- FPA policies and boundary setting
- Septage pre-treatment facilities (new)
- 51 FPA descriptions for 39 existing Publicly Owned Treatment Works (POTWs) – wastewater treatment plants



# Policy Updates

- Package Sewage Treatment Plants
  - a “package plant” is inherently a temporary sewage treatment facility, to be used only until such a time as public sewerage service becomes available.
- Septage Pre-Treatment (New policy)
  - Permissive language for privately-owned septage pretreatment facilities, unless contrary language in FPA description. None of the FPAs currently have restrictions.



# **FPA Descriptions**

## **Facility Planning Area**

- Area in which local governments plan to provide sanitary sewer service, as needed, in the next twenty years.
- Each FPA has one existing or planned public WWTP to which sewers will connect
- Privately owned WWTPs may be used till public sewers become available
- An FPA is a wastewater treatment area, not an annexation plan
- Planning boundary comes with commitment to provide service



# FPA Description: DMA Roles

- An FPA is a partnership of DMAs, each with specific responsibilities

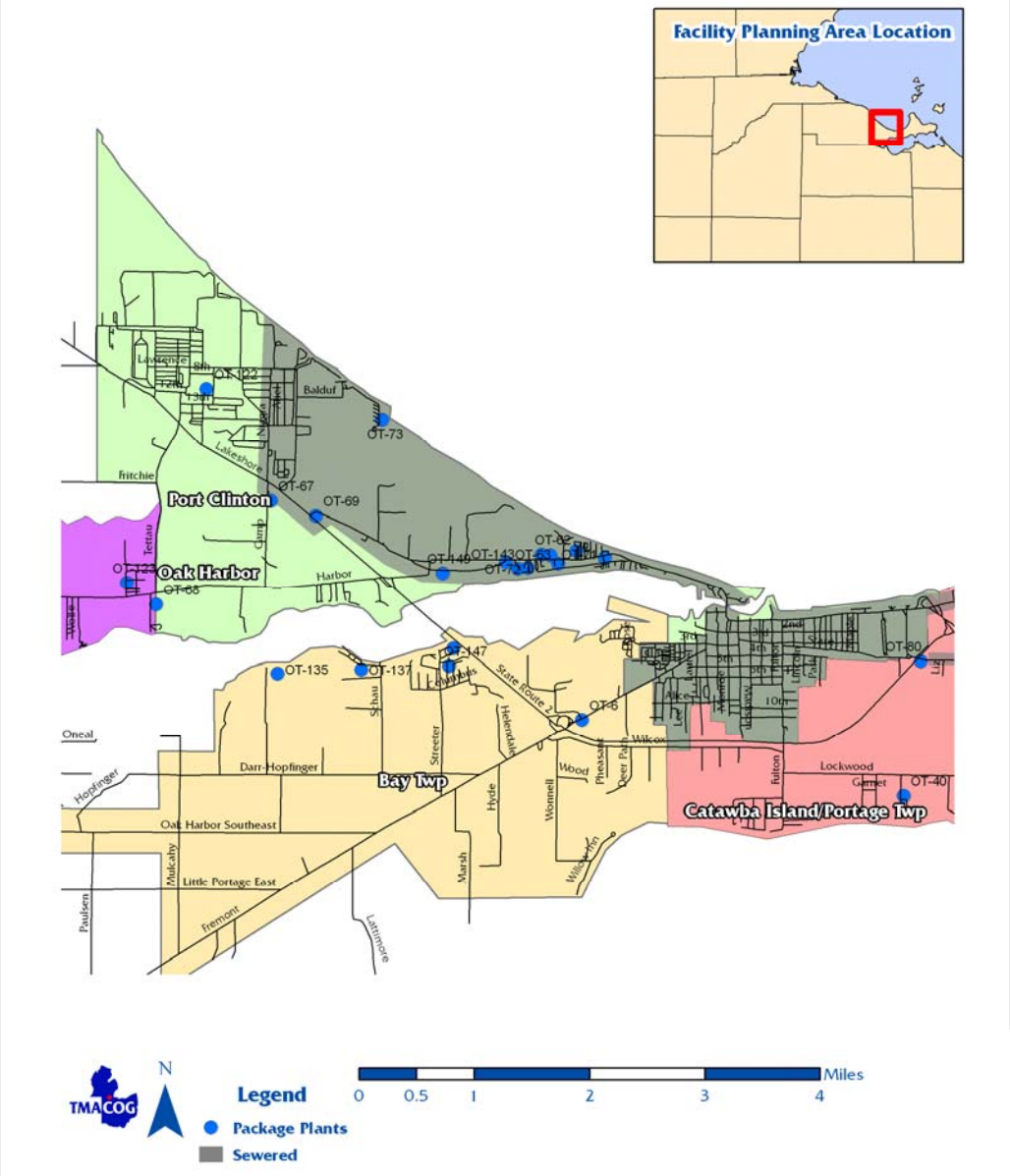
## PORT CLINTON FACILITY PLANNING AREA

### Designated Management Agency Responsibilities:

- **City of Port Clinton:** Owns and operates wastewater treatment facilities, and collection system within the corporate limits.
- **Ottawa County:** Owns and operates the collection system in unincorporated areas, connecting to the Port Clinton system for treatment services under contract with the County.



# FPA: Map



# FPA: Population

TABLE ONE		
	2000	2030
Port Clinton, entire jurisdiction	6,394	4,297
Bay Township, entire jurisdiction	1,294	1,308
Erie Township, entire jurisdiction	1,328	783
<b>Total Population inside the FPA boundary</b>	<b>7,194</b>	<b>4,781</b>

- Total current and projected by jurisdiction inside or outside of FPA
- Inside FPA boundary: total of just those areas
- Seasonal systems consider peak summer flows as well (e.g. Ottawa County)



# FPA: Present Facilities

- POTW
- Package Plants

## Present Facilities

Port Clinton has an activated sludge plant which experiences heavy I/I flows. The treatment plant has begun expansion with the completion of Phase I in 2004. Phase I included new primary treatment, chlorination, and the Actiflo system. The design average daily flow rate is 1.5 mgd; the plant has a peak daily design for secondary treatment of 4.0 mgd, and a peak daily flow rate of 24 mgd for there Actiflo system. OEPA data shows an average flow of 1.843 mgd, and a peak flow of 17.110 mgd during the period of 2004-2009.

There are numerous of package sewage treatment plants in the Port Clinton FPA. They are listed in Table 2

<b>Package Plants In The Facility Planning Area</b>				
<b>Table Two</b>				
<b><u>Package Plant</u></b>	<b><u>Status</u></b>	<b><u>Install or Upgrade Date</u></b>	<b><u>NPDES Permit</u></b>	<b><u>Capacity, gpd</u></b>
Erie Township School	Inactive	1951		1,875
Lakefront Marina	Active	1978, 1987		7,440
Lakefront Villa Condominiums	Active	1988		25,000
Mikey's Bar/Restaurant	Active	1989		7,000
Perry House	Active	1969		2,500
Portage View Mobile Home Park	Active	1985		12,500
Spinnaker Bay Yacht/Beach Club	Active			20,000
Sunset Inn	Active	1974		9,000
Transmissions Unlimited	Active	1971		5,000
Wagon Wheel Trailer Court	Active	1960		7,500
White Caps Campground	Active	1988		6,000
White Caps Motel & Trailer Park	Active	1963		7,500
Willow Beach Trailer Park	Active	1964		9,000



# FPA: Issues

- What issues need to be addressed to meet NPDES requirements?
- POTW – capacity, effluent limits?
- Collection system – CSOs, I/I?
- Unsewered areas – onsite, package plants?



# FPA: Future Needs

- Needed Improvements
- CIP Table

## Future Needs

- The Consent Decree required the City to prepare a CSO abatement Plan, which is now being implemented. The wet weather design uses an “Actiflo” system capable of handling 20 mgd. The “Actiflo” system is a compact device that includes screening, flocculation, settling, and disinfection. Continued improvement of the Actiflo system will be included in the first phase (Phase IA).
- Ottawa County and the City of Port Clinton have entered into a wastewater treatment services agreement for a portion of Erie Township, including Camp Perry, the Erie Industrial Park, and the BFI landfill. The sewer design, estimated to cost \$3.42 million<sup>1</sup>, calls for a combination of pressure and gravity lines, oversized to provide capacity for future service. The first areas served were Camp Perry and Fenner

**Capital Improvement Schedule – Put-in-Bay FPA**

**Table Four**

Project	DMA	Total Cost	Annual Capital Improvement Needs							
			2010	2011	2012	2013	2014	2015	2016	2017
Wastewater Treatment Plant	Put-in-Bay	\$3,850,000	3,850,000							
East Point / Toledo / Sybil / Ibis Waterline & Sanitary Sewer Extensions	Put-in-Bay	\$2,593,000	2,593,000							
South Bass Island Resort Sanitary Sewer Project	Ottawa County	\$3,156,500								
		\$9,599,500								



# How is 208 Used?

- Federal
  - Clean Water Act
- Michigan
  - A tool for local governments to predict future needs and plan capital improvements
- Ohio
  - A tool for local governments to predict future needs and plan capital improvements, and
  - OEPA cannot approve a permit in conflict with a 208 Plan: ORC §6111.03(J)(2)(B)



# What does ORC §6111.03(J)(2)(B) Mean?

*(2) An application for a permit or renewal thereof shall be denied if any of the following applies ... (b) The director determines that the proposed discharge or source would conflict with an areawide waste treatment management plan adopted in accordance with section 208 of the Federal Water Pollution Control Act;*

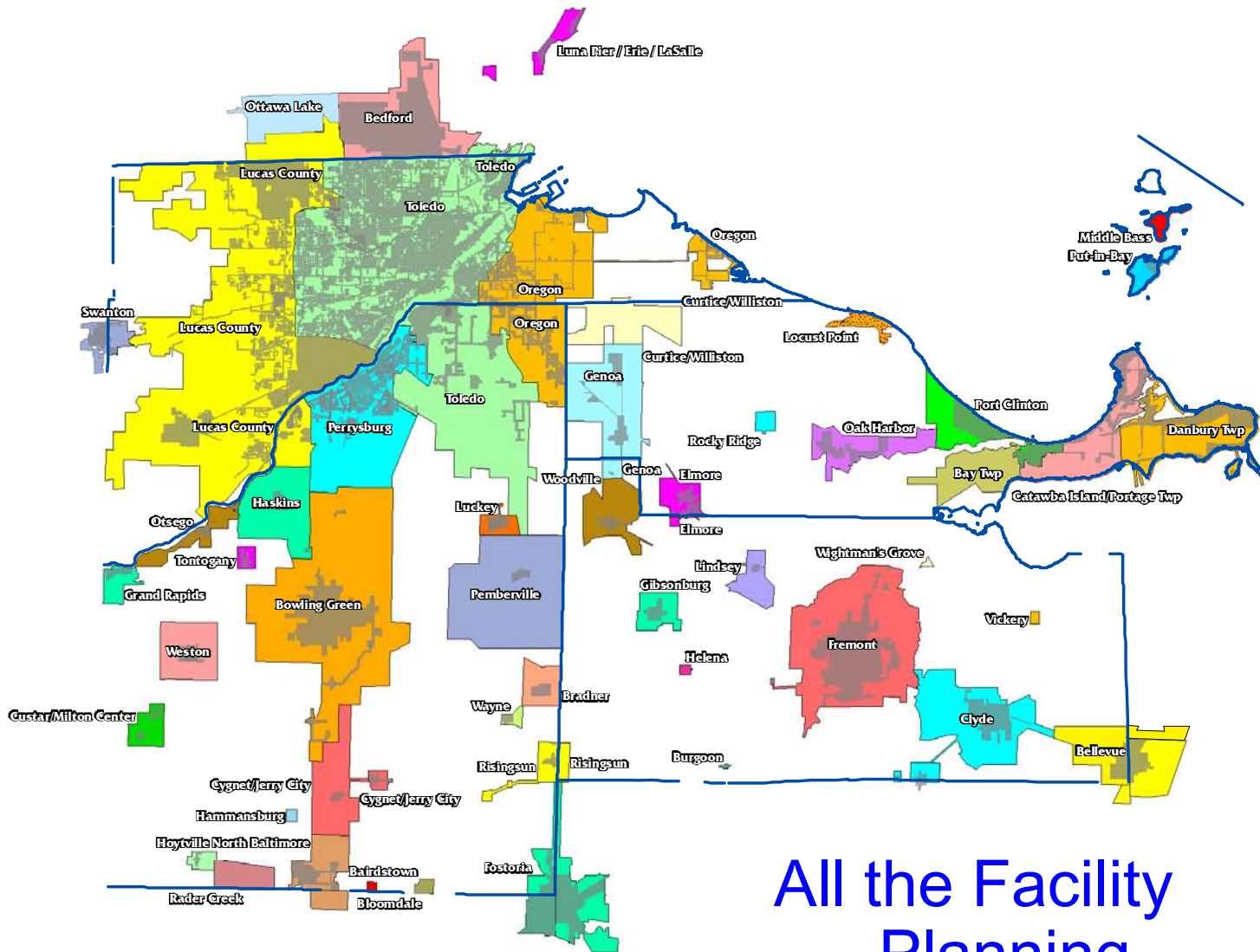
- “Permit” most often means NPDES or PTI
- 208 consistency reviews for projects with federal grants or loans standard practice
- Similar language
  - OEPA onsite systems, in Ohio Administrative Code
  - AFOs, in ORC



# 208 Policies

- Wastewater service areas
  - Protects capital investment – prevents duplication
  - Obligation to provide service
  - FPAs extending into neighboring counties: recommendations
- Tap to available and accessible sewers
  - Septic systems
  - Package plants





All the Facility  
 Planning  
 Areas of the  
 Region



# FPA Updates

- Area in which local governments plan to provide sanitary sewer service, as needed, in the next twenty years.
- All FPAs:
  - Maps, adding package plants
  - Update package plant inventory
  - Current flow data
  - Sewer requirements for new subdivision:  
Lucas and Wood
  - Population forecasts where FPA boundaries have changed



# **FPA Updates (handout)**

- 53 total
- No changes: 15
- CIP update: 27
- Facilities update: 21
- Deleted: Green Springs, West Millgrove
- Added: Ottawa Lake, Rader Creek
- 51 total after deletions



# FPA Updates

- FPA boundary updates: 12
  - Bowling Green
  - Bradner
  - Clyde
  - Cygnet
  - Genoa
  - Grand Rapids
  - Haskins
  - Lucas County
  - Luna Pier
  - Oak Harbor
  - Oregon
  - Risingsun



# Major FPA Changes

- Bowling Green: Add Country Manor Estates. Expand to cover Kramer/Huffman critical area. Expand to cover force main from Rudolph.
- Clyde: add Green Springs system
- Grand Rapids: add Henry County service area
- Haskins: Delete Country Manor Estates
- Luna Pier: decrease FPA to likely development area
- Risingsun: add West Millgrove and Hatton



# “Package” Sewage Treatment Plants

- Privately owned, unsewered areas, temporary till sewers are available

Package Plant Statistics <sup>16</sup>			
	Total Package Plants	Package Plants with NPDES Permits	Package Plants in Use
Lucas County	<u>4339</u>	<u>76</u>	<u>3734</u>
Monroe County <sup>17</sup>	<u>85</u>	<u>85</u>	<u>85</u>
Ottawa County	<u>6863</u>	<u>3339</u>	<u>6660</u>
Sandusky County	44	<u>1318</u>	36
Wood County	<u>4240</u>	<u>1216</u>	<u>3534</u>
Totals	<u>191,205</u>	<u>84,73</u>	<u>169,182</u>



# Sewerage Improvement Needs for the 51 FPAs

## Summary of FPA Needed Improvements - TMACOG 208 Planning Area

No wastewater improvements needed						15	<b>CSO or extraneous flow issues</b>  21 Systems with CSO or I/I issues 51 Total systems
Wastewater improvements needed, but no cost figures						10	
Wastewater improvements needed; some cost figures available.						8	
Wastewater improvements needed; cost figures available.						18	
<b>Total FPAs</b>						<b>51</b>	
<b>Total CSO or I/I facility improvement needs</b>						<b>\$376,630,703</b>	76%
<b>Total Identified needed facility improvements for the region</b>						<b>\$495,438,551</b>	



# Chapter 5

## Onsite Sewage Treatment



# Onsite Sewage Treatment

- Federal, state regional, and local programs and regulations on sewage treatment where there are no public sewers
- Septic systems
- “Package” sewage treatment plants
- Sludge (Biosolids)
- Critical Areas
- When connections to public sewers are required



# Chapter 5 Updates

- Recommended criteria for determining whether interceptors and force mains are “available and accessible” for local service.
  - Ultimately, the determination is made by the DMA
  - Capacity of the pipeline and pumping equipment is a key consideration.



# Critical Sewage Areas

## ● Definition

- Concentration of onsite systems known/ suspected to have failed
- Systems on small lots without room for replacements
- Soil conditions for leaching fields are poor

## ● Recommendation

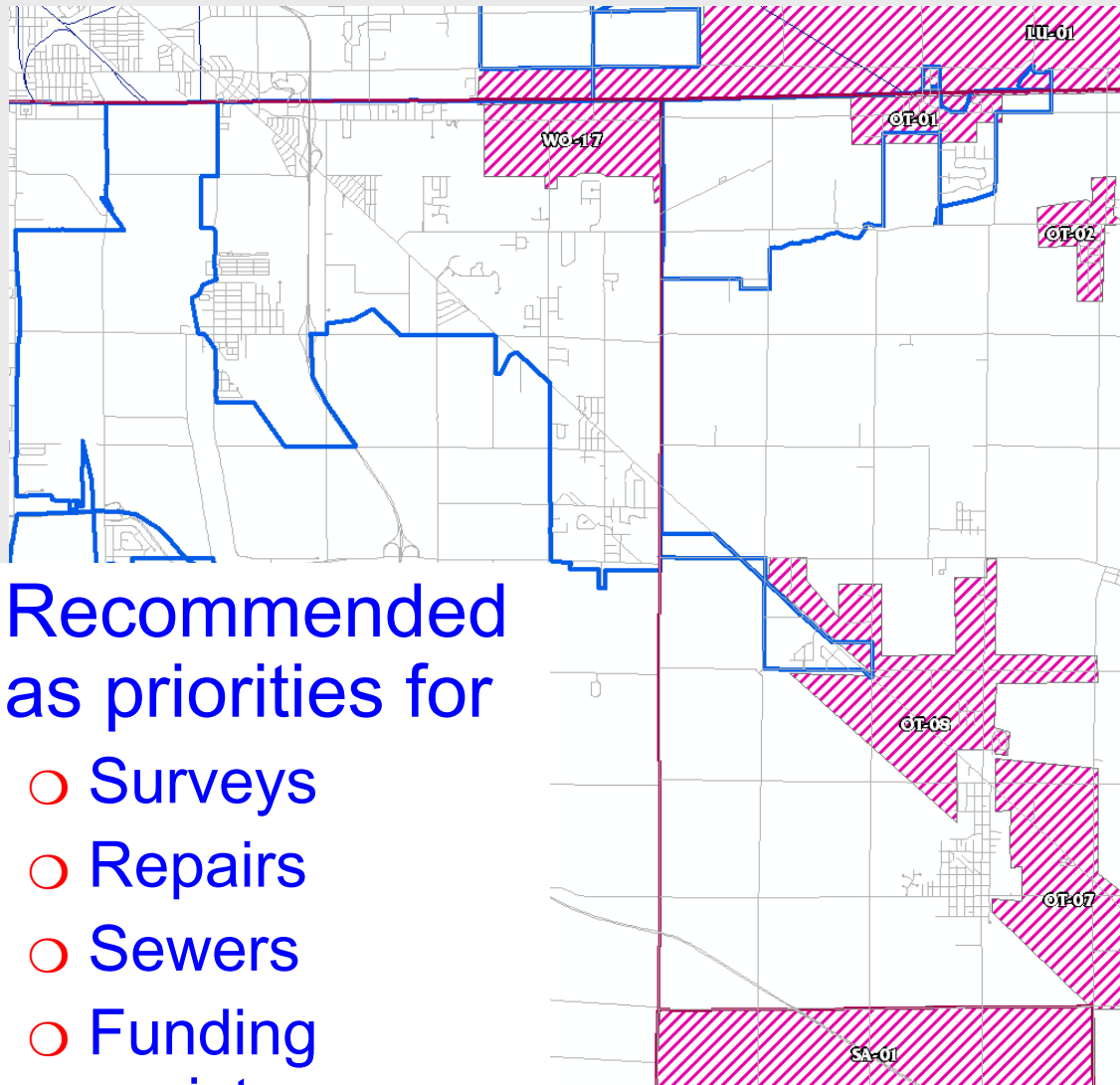
- Priority areas for sanitary surveys
- Priority areas for system inspection and maintenance
- Priority areas for public sewers
- Financial assistance to homeowners for upgrading systems



# Critical Sewage Area Examples

- Systems known / suspected failed
- Small lots
- Poor soil conditions

- Recommended as priorities for
  - Surveys
  - Repairs
  - Sewers
  - Funding assistance



# Critical Sewage Area Major Changes

- Monroe
  - Add Ottawa Lake
- Lucas
  - Delete Reno Beach / Bono — sewerred; retain unsewered Jerusalem Township areas as critical
- Sandusky
  - Delete Helena
  - Delete Risingsun
  - Gibsonburg: extend Rodriguez Street area
- Ottawa
  - Removed sewerred areas in Danbury as no longer critical
  - Added Heritage Road
- Wood
  - Delete Risingsun, Liberty Hi
  - Add Bays/Bradner
  - Boundaries / map changes:
    - Stony Ridge
    - Dunbridge
    - Curtice/Bradner
    - Mermill



# Chapter 6

## Agricultural Runoff



No changes proposed from  
plan adopted in 2008



# Chapter 7

## Urban Runoff

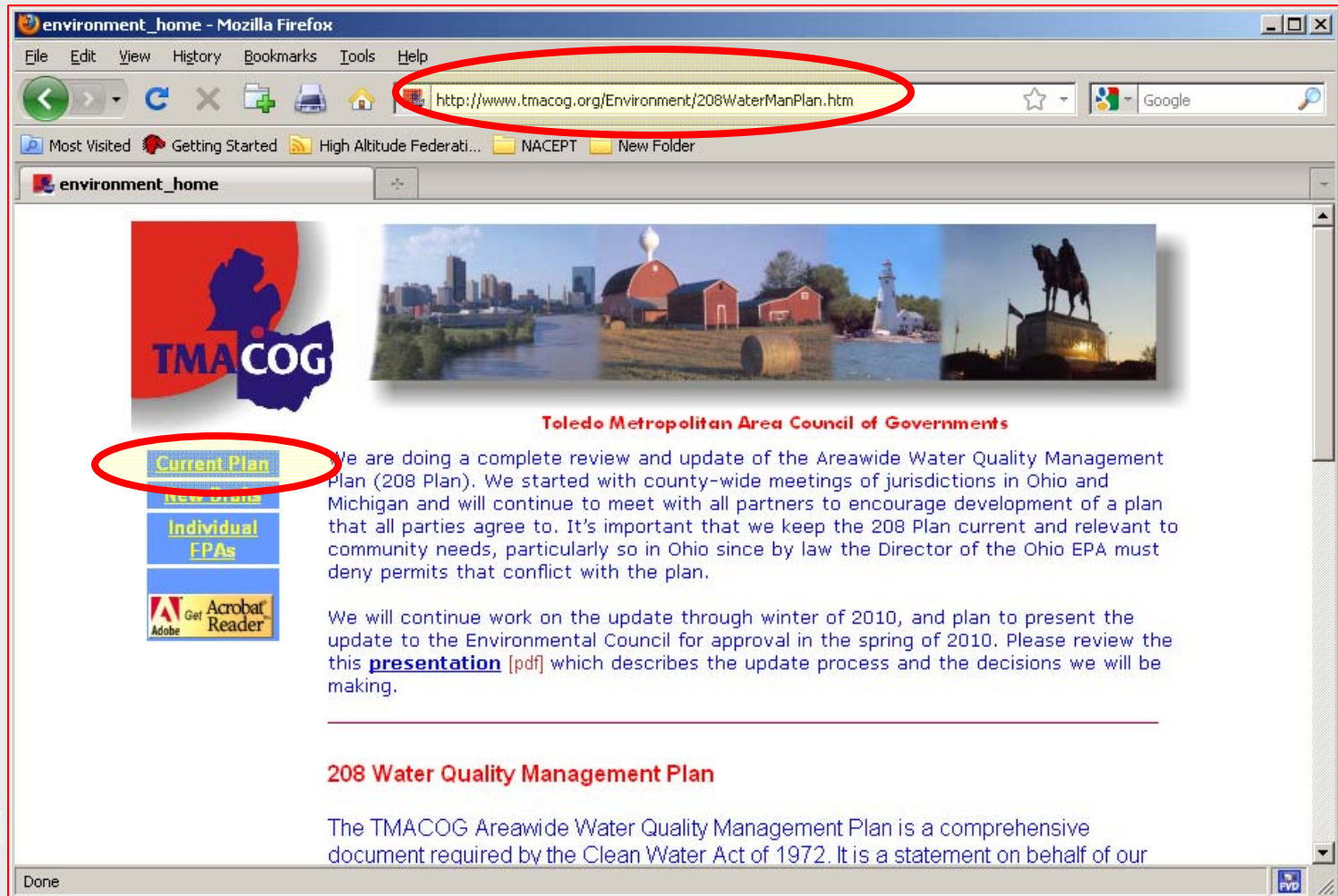


No changes proposed from  
plan adopted in 2008



# 208 Plan: How to Access

- TMACOG.ORG ➔ Environment ➔ Environmental Council ➔ 208 Plan





environment\_home - Mozilla Firefox

File Edit View History Bookmarks Tools Help

http://www.tmacog.org/Environment/208WaterManPlan.htm

environment\_home



**Toledo Metropolitan Area Council of Governments**

[Current Plan](#)

[New Plans](#)

[Individual EPAs](#)

Get Adobe Acrobat Reader

We are doing a complete review and update of the Areawide Water Quality Management Plan (208 Plan). We started with county-wide meetings of jurisdictions in Ohio and Michigan and will continue to meet with all partners to encourage development of a plan that all parties agree to. It's important that we keep the 208 Plan current and relevant to community needs, particularly so in Ohio since by law the Director of the Ohio EPA must deny permits that conflict with the plan.

We will continue work on the update through winter of 2010, and plan to present the update to the Environmental Council for approval in the spring of 2010. Please review the this [presentation](#) [pdf] which describes the update process and the decisions we will be making.

---

**208 Water Quality Management Plan**

The TMACOG Areawide Water Quality Management Plan is a comprehensive document required by the Clean Water Act of 1972. It is a statement on behalf of our

Done



# Current Plan: Adopted 2008

TMACOG "208" Areawide Water Quality Management Plan - Mozilla Firefox

File Edit View History Bookmarks Tools Help

http://www.tmacog.org/Environment/208currentplan/208WaterManPlan\_A.htm

Most Visited Getting Started High Altitude Federati... NACEPT New Folder

TMACOG "208" Areawide Water Qual...

TOLEDO METROPOLITAN AREA COUNCIL OF GOVERNMENTS				
208 Areawide Water Quality Management Plan				
Current Versions of Complete Chapters				
AWQMP Chapter or FPA	Click here to download file	Details or Notes	Adopted TMACOG Board of Trustees	Certified Governor of Ohio
Complete <i>Areawide Water Quality Management Plan</i>	<a href="#">TMACOG AWQMP</a>	Complete text of AWQMP including all 7 chapters. <b>Large download.</b>	6/11/2008	Pending
AWQMP Chapter 1 Areawide Overview	<a href="#">AWQMP1</a> <a href="#">AWQMP 1 Executive Summary</a>	Overview of TMACOG region, its natural resources, and environmental issues	6/11/2008	Pending
AWQMP Chapter 2, Environmental Policies	<a href="#">AWQMP2</a> <a href="#">AWQMP 2 Executive Summary</a>	Goals and policy statements of the TMACOG 208 Plan, and listing of documents incorporated by reference.	6/11/2008	Pending
AWQMP Chapter 3: Water Quality Management Framework	<a href="#">Awqmp3</a>	This chapter discusses public agencies and their responsibilities as Designated Management Agencies (DMAs) in implementing the AWQMP. This chapter also explains the plan amendment process.	6/11/2008	Pending

Done





# New Drafts

environment\_home - Mozilla Firefox

File Edit View History Bookmarks Tools Help


http://www.tmacog.org/Environment/208WaterManPlan.htm

environment\_home



**Toledo Metropolitan Area Council of Governments**

[Current Plans](#)  
**New Drafts**  
[Individual EPAs](#)



We are doing a complete review and update of the Areawide Water Quality Management Plan (208 Plan). We started with county-wide meetings of jurisdictions in Ohio and Michigan and will continue to meet with all partners to encourage development of a plan that all parties agree to. It's important that we keep the 208 Plan current and relevant to community needs, particularly so in Ohio since by law the Director of the Ohio EPA must deny permits that conflict with the plan.

We will continue work on the update through winter of 2010, and plan to present the update to the Environmental Council for approval in the spring of 2010. Please review the this [presentation](#) [pdf] which describes the update process and the decisions we will be making.

---

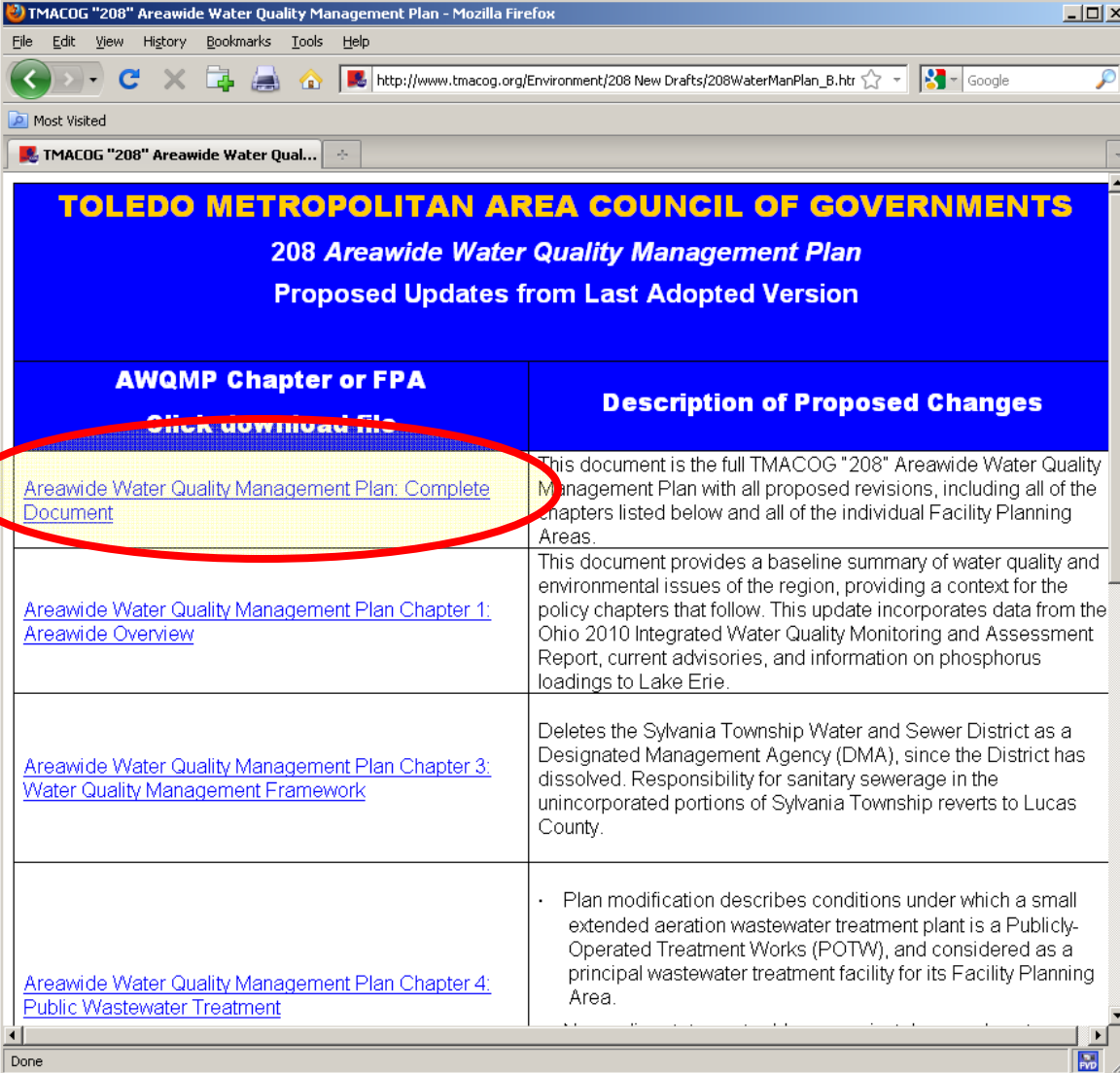
**208 Water Quality Management Plan**

The TMACOG Areawide Water Quality Management Plan is a comprehensive document required by the Clean Water Act of 1972. It is a statement on behalf of our

Done



# Complete Revised Chapters for Review



**TOLEDO METROPOLITAN AREA COUNCIL OF GOVERNMENTS**  
**208 Areawide Water Quality Management Plan**  
**Proposed Updates from Last Adopted Version**

<b>AWQMP Chapter or FPA</b> <b>Click download file</b>	<b>Description of Proposed Changes</b>
<a href="#">Areawide Water Quality Management Plan: Complete Document</a>	This document is the full TMACOG "208" Areawide Water Quality Management Plan with all proposed revisions, including all of the chapters listed below and all of the individual Facility Planning Areas.
<a href="#">Areawide Water Quality Management Plan Chapter 1: Areawide Overview</a>	This document provides a baseline summary of water quality and environmental issues of the region, providing a context for the policy chapters that follow. This update incorporates data from the Ohio 2010 Integrated Water Quality Monitoring and Assessment Report, current advisories, and information on phosphorus loadings to Lake Erie.
<a href="#">Areawide Water Quality Management Plan Chapter 3: Water Quality Management Framework</a>	Deletes the Sylvania Township Water and Sewer District as a Designated Management Agency (DMA), since the District has dissolved. Responsibility for sanitary sewerage in the unincorporated portions of Sylvania Township reverts to Lucas County.
<a href="#">Areawide Water Quality Management Plan Chapter 4: Public Wastewater Treatment</a>	<ul style="list-style-type: none"><li>Plan modification describes conditions under which a small extended aeration wastewater treatment plant is a Publicly-Operated Treatment Works (POTW), and considered as a principal wastewater treatment facility for its Facility Planning Area.</li></ul>





# Individual FPAs

environment\_home - Mozilla Firefox

File Edit View History Bookmarks Tools Help

http://www.tmacog.org/Environment/208WaterManPlan.htm

environment\_home



**Toledo Metropolitan Area Council of Governments**

[Current Plan](#)  
[New Draft](#)  
**[Individual FPAs](#)**  
[Acrobat Reader](#)

We are doing a complete review and update of the Areawide Water Quality Management Plan (208 Plan). We started with county-wide meetings of jurisdictions in Ohio and Michigan and will continue to meet with all partners to encourage development of a plan that all parties agree to. It's important that we keep the 208 Plan current and relevant to community needs, particularly so in Ohio since by law the Director of the Ohio EPA must deny permits that conflict with the plan.

We will continue work on the update through winter of 2010, and plan to present the update to the Environmental Council for approval in the spring of 2010. Please review the this [presentation](#) [pdf] which describes the update process and the decisions we will be making.

---

**208 Water Quality Management Plan**

The TMACOG Areawide Water Quality Management Plan is a comprehensive document required by the Clean Water Act of 1972. It is a statement on behalf of our

Done



# Each FPA with current draft revisions

TMACOG "208" Areawide Water Quality Management Plan - Mozilla Firefox

File Edit View History Bookmarks Tools Help

http://www.tmacog.org/Environment/208 Individual FPAs/208WaterManPlan\_C.ht

Most Visited Getting Started High Altitude Federati... NACEPT New Folder

TMACOG "208" Areawide Water Qual...

**TMACOG 208 AREAWIDE WATER QUALITY MANAGEMENT PLAN**

**Individual Sewerage Facility Planning Areas (Part of Chapter 4)**

**Current Draft Revisions**

Chapter 4 of the AWQMP includes 50 sewerage Facility Planning Areas, or FPAs. By downloading the full chapter, you get all of them, as last adopted. You can select individual FPAs below, with proposed updates.

TMACOG's 208 Planning Area covers Lucas, Ottawa, Sandusky, and Wood Counties in Ohio; and Bedford, Erie, and Whiteford Townships of Monroe County, Michigan. Some FPAs cover parts of neighboring counties. These areas are recommendations, but may be certified as part of Ohio's State Water Quality Management Plan.

Facility Planning Area	County (Counties)	Download Link
Capital Improvements Summary - All Facility Planning Areas	Lucas, Monroe, Ottawa, Sandusky, Wood	<a href="#">FPA Needs</a>
Bairdstown	Wood	<a href="#">Bairdstown</a>
Bay Township	Ottawa	<a href="#">Bay</a>
Bedford	Monroe	<a href="#">Bedford</a>
Bellevue	Erie Sandusky Seneca	<a href="#">Bellevue</a>
Bloomdale	Wood	<a href="#">Bloomdale</a>
Bowling Green	Wood	<a href="#">Bowling Green</a>
Bradner	Wood	<a href="#">Bradner</a>
Burgoon	Sandusky	<a href="#">Burgoon</a>
Catawba Island/Portage Township	Ottawa	<a href="#">Catawba</a>
Clyde	Sandusky	<a href="#">Clyde</a>

Done



# Questions and Discussion

- Public comment deadline: June 7 2010, 5:00 PM
- Review and Approval Process
- TMACOG Environmental Council
  - Thursday May 27 1:30 Hoffman Road Landfill
- TMACOG Executive Committee
  - Wednesday June 9 12:00 - Board Room
- TMACOG Board of Trustees
  - Wednesday June 9 12:00 - Board Room
- <http://www.tmacog.org/208WaterManPlan>