

RESOLUTION OF TMACOG
UPDATING AND ADOPTING THE *AREAWIDE WATER QUALITY MANAGEMENT PLAN*

WHEREAS, the Toledo Metropolitan Area Council of Governments (TMACOG) is a voluntary association of local governments and non-governmental partners in northwest Ohio and southeast Michigan; and

WHEREAS, pursuant to §208 of the Federal Water Pollution Control Act Amendments of 1972, PL 92-500 and the Clean Water Act of 1977, PL 95-217, the *Areawide Water Quality Management Plan* was developed and adopted on December 19, 1976 by TMACOG; and

WHEREAS, the TMACOG Board of Trustees adopted the previous *Areawide Water Quality Management Plan* on June 9, 2010; and

WHEREAS, the *AWQMP* is comprehensive in scope, and many streams in the region fail to meet the Clean Water Act “fishable and swimmable” goals due to nonpoint sources of water pollution; and

WHEREAS, the Governors of Michigan and Ohio have certified the *Areawide Water Quality Management Plan* as part of the State Water Quality Management Plans for Lucas, Ottawa, Sandusky, Wood Counties, Ohio; and Bedford, Erie, and Whiteford Townships in Monroe County; and

WHEREAS, the *Areawide Water Quality Management Plan* Chapter 1 describes the region’s geology, geography, and natural resources, establishing the setting for the entire Plan; and

WHEREAS, the *Areawide Water Quality Management Plan* Chapter 2 codifies the environmental policies adapted by TMACOG, and identifies documents incorporated into the 208 and compatible plans of stakeholders and partners; and

WHEREAS, the *Areawide Water Quality Management Plan* Chapters 3 and 4 delineate Sewerage Facility Planning Areas (FPAs) for which sanitary sewerage service should be considered within the next twenty years and identified responsibilities of Designated Management Agencies (DMAs); and

WHEREAS, Chapter 5 of the *AWQMP* recommends regional policies to manage onsite sewage treatment systems such as septic tanks and “package” sewage treatment plants, summarizing state programs, regulations set at the county level, and identifying “Critical Sewage Areas” to recommend priorities for addressing failed onsite sewage systems; and

WHEREAS, the *Areawide Water Quality Management Plan* Chapter 7 discusses the water quality impacts of urban runoff, and recommends best practices for stormwater management; and

WHEREAS, the TMACOG Environmental Council voted to recommend approval of this update of the *Areawide Water Quality Management Plan* for approval at its May 26, 2011 meeting.

WHEREAS, NOW, THEREFORE, BE IT RESOLVED BY TMACOG:

THAT the TMACOG *Areawide Water Quality Management Plan* be updated and adopted, with this update superceding all previous versions; and

THAT the President be and he is hereby authorized to submit this amendment to Ohio EPA and Michigan DEQ for certification into their respective Statewide *Water Quality Management Plans*.

Adopted by the Board of Trustees June 8, 2011

Yea xx, Nay -x-, Abstain -x-

Theodore J. Rutherford, Chair
TMACOG

Anthony L. Reams, President
TMACOG

Staff Report
TOLEDO METROPOLITAN AREA COUNCIL OF GOVERNMENTS

Subject: *Areawide Water Quality Management Plan*

The Clean Water Act of 1972 brought Federal funding to many communities across the country to build sanitary sewers and upgrade treatment systems. Section 208 of the Clean Water Act calls for Areawide planning to address water quality problems. The purpose of Areawide planning is to foster communication and cooperation among local governments, allow for coordination on environmental issues that cross political boundaries, and permit efficient and effective use of public funds.

The TMACOG 208 Plan website is:

<http://www.tmacog.org/208WaterManPlan.htm>

The **version adopted in 2010** by the TMACOG Board of Trustees may be found at:

<http://www.tmacog.org/Environment/208currentplan/TMACOG%20AWQMP.pdf>

The full TMACOG 208 Plan as **proposed for adoption in 2011** may be found at:

http://www.tmacog.org/Environment/208%20New%20Drafts/TMACOG_AWQMP.pdf

The approval process is as follows:

- The TMACOG Environmental Council recommends approval to the TMACOG Executive Committee and Board of Trustees.
- TMACOG Executive Committee reviews the plan update and forwards it to the Board of Trustees.
- The Board of Trustees formally adopts the 208 Plan on behalf of TMACOG.
- TMACOG staff submits the updated 208 Plan to Ohio EPA and Michigan DEQ, with a request that the respective Governors certify it as part of the State Water Quality Management Plan.
- The Governors certify the 208 plans.

The Ohio Revised Code (ORC §6111.03j2b) requires the Director of OEPA to deny any permit which would conflict with an adopted 208 plan.

The *Areawide Water Quality Management Plan* lays out sanitary sewerage planning areas, and establishes TMACOG policy on both point and non-point source water quality issues. As such, it has served as the basis for TMACOG's continuing water quality program. The Plan identifies Designated Management Agencies (DMAs) — local governmental agencies who have responsibilities in the Plan. Below are summaries of proposed changes to the Plan in this update:

1. Areawide Overview

This chapter serves as an introduction to the 208 Plan: it describes geography, natural resources, and environmental issues affecting our region. It also discusses the legal basis for the 208 Plan. No substantive changes are proposed for this chapter.

2. Environmental Policies

This chapter discusses state, federal, and international laws and agreements that form the basis of our

environmental policies. Further, it codifies TMACOG's environmental policies and guidance on how they should be applied. Finally, it identifies TMACOG documents that are incorporated by reference as part of the 208 Plan.

This update adds several policy positions taken by TMACOG:

- Supporting Federal Assistance for Public Wastewater Treatment Infrastructure Financing
- Supporting Removal of Drainage Obstructions on the Portage River
- Supporting the Clean Ohio Fund
- Supporting Ohio Legislation and Regulations for Onsite Sewage Treatment Systems
- Excluding Invasive Asian Carp Species from the Great Lakes

3. Water Quality Management Framework

The 208 Plan is a statement of our region on what roles local governmental agencies have in implementing the Clean Water Act. For most counties, cities, villages, and water/sewer districts, the role is operating a sanitary sewerage system. Other roles include stormwater management (under NPDES Phase I and II regulations), septic systems (Health Districts), and agricultural runoff (SWCDs). Governmental agencies with roles in these areas are called “Designated Management Agencies,” or DMAs. This chapter lists the DMAs, and their responsibilities under the Clean Water Act. No substantive changes are proposed for this chapter.

4. Public Wastewater Treatment

This is the chapter on sewage treatment. It consists of policies and issues covering the entire region, and 50 individual sanitary sewerage Facility Planning Area descriptions (FPAs).

Each FPA addresses an existing or planned public wastewater treatment facility. In most cases, the treatment plant’s planning area covers parts of several political jurisdictions. FPA boundaries should be viewed as 20-year potential service areas. The Ohio Revised Code requires Ohio EPA to deny sewerage permits that are inconsistent with 208 plans. For this reason, keeping TMACOG's 208 Plan current, and meeting the needs of local jurisdictions is important.

Each FPA covers the following points:

- Who are the DMAs and what are their roles?
- What are the FPA boundaries, and where are sewers presently available?
- What are the present and projected populations of the FPA?
- What are the present sewerage facilities, including public infrastructure and “package” sewage treatment plants?
- What sewerage facility improvements will be needed to meet NPDES requirements, and how much will the necessary capital improvements cost?

Each FPA description may include its specific policies that direct what sewage treatment options should be available. To summarize the changes made to the FPAs:

- No substantive changes: 14
- Future needs and CIP update: 31
- Facilities information update: 24
- FPA boundary changes: 3 (Fremont, Wightman’s Grove, Oregon)
- DMA role updates: 10

Updates are given for each FPA in the table below.

| FPA | Proposed updates to FPA |
|---------------------------------|---|
| All | Map updates, package plants, Critical Sewage Areas |
| Bairdstown | Text updates |
| Bay Township | No updates |
| Bedford Township | No updates |
| Bellevue | Facilities update |
| Bloomdale | No updates |
| Bowling Green | Facilities update CIP update Critical Areas Ordered areas |
| Bradner | Updated package plant data |
| Burgoon | No updates |
| Catawba Island/Portage Township | Sewered area data update CSA update CIP update |
| Clyde | CIP update |
| Curtice/Williston | No updates |
| Custar/Milton Center | Text updates |
| Cygnets/Jerry City | DMA roles update |
| Danbury Township | Sewered area data CSA updates CIP update |
| Elmore | CIP update |
| Fostoria | Facilities, package plants, and CIP update |
| Fremont | Facilities update Updated sewer area data FPA boundary change removing Adam’s Acres and Westwood package plants from the FPA (i.e., they will not connect to Fremont sewers) FPA boundary change moving the Barkshire Hills subdivision to the Wightman’s Grove FPA (i.e., will connect to the new Wightman’s Grove wastewater plant, not Fremont) Updated populations for new boundaries CIP update |
| Genoa | update package plant information CIP update |
| Gibsonburg | CIP update |
| Grand Rapids | DMA roles update |
| Hammansburg | Updated future needs |
| Haskins | Updated DMA roles and future needs |

| FPA | Proposed updates to FPA |
|----------------------------|---|
| Helena | The new WWTP is now operational. Updated package plants, future needs, CIP. |
| Hoytville | Updated future needs, CIP |
| Lindsey | Updated future needs, CIP |
| Locust Point | Text corrections |
| Lucas County | Update DMA roles Updated existing sewer maps from county Updated package plant data CIP updates from all DMAs |
| Lucky | Updated facility and future needs |
| Luna Pier / Erie / LaSalle | CIP update |
| Middle Bass | Facilities update |
| North Baltimore | Updated DMA roles Facilities update CIP update |
| Oak Harbor | No updates |
| Oregon | Updated DMA roles Modified FPA boundary include Maumee Bay State Park, and update population figures Updated package plants Facilities update CIP update |
| Otsego | No updates |
| Ottawa Lake | No updates |
| Pemberville | DMA roles updated New WWTP is now operational Facilities and future needs update CIP update |
| Perrysburg | DMA roles updated Facilities update Future needs and CIP update |
| Port Clinton | Facilities update CIP update |
| Put-in-Bay | Facilities update: WWTP expansion now operational Updated sewer area data CIP update |
| Rader Creek | DMA roles update Facility and CIP update |
| Risingsun | Facilities update Future needs and CIP update Ordered areas (Bays/Bradner) |
| Rocky Ridge | No updates |
| Swanton | Facilities update Future needs and CIP update |
| Toledo | DMA roles updated Updated package plants Updated CSAs Facilities update Future needs and CIP update, notably for progress on and future needs of Waterways Initiative, and WWTP wet weather capacity improvements |

| FPA | Proposed updates to FPA |
|------------------|--|
| Tontogany | Issues updated |
| Vickery | No updates |
| Wayne | No updates |
| Weston | Facilities update Future needs and CIP update |
| Wightman's Grove | Expanded FPA to include Barkshire Hills subdivision and other parts of Riley Township (i.e., these areas will connect to the new Wightman's Grove wastewater plant, not Fremont) Update population figures for new FPA boundary Updated future needs and CIP |
| Woodville | CSA update Facilities update Future needs and CIP update |

5. On-Site Sewage Treatment

This chapter covers “onsite sewage treatment systems” meaning septic tanks and package plants. The update includes “Critical Sewage Areas” (CSA) identified by the county health departments. They have been updated for all four Ohio counties. The definition of CSAs has been changed to place emphasis on sanitary sewers to eliminate failed onsite systems. The listing of package sewage treatment plants that are not within any FPA has been updated as well.

The Critical Sewage Areas are listed below; a map is attached at the end of this resolution.

Critical Sewage Areas

| Lucas County | |
|--|--------|
| NAME | NUMBER |
| Neapolis | LU-02 |
| Monclova | LU-04 |
| Pt Place/Washington Twp | LU-05 |
| Swan Cr Headwaters: Airport-Swanton | LU-06 |
| Alexis/Whiteford | LU-07 |
| Springbrook/Davis | LU-09 |
| SR 64 NW of Whitehouse | LU-10 |
| Berridge Road | LU-11 |
| Bittersweet Farms/Camp Courageous | LU-12 |
| Rancamp | LU-13 |
| State Line + Detroit-Alexis-CSX Triangle | LU-15 |
| Longworth | LU-16 |
| East Hancock | LU-17 |
| West Hancock | LU-18 |
| River Road | LU-20 |
| Bailey Road | LU-21 |
| Reno Beach | LU-22 |
| North Toledo | LU-23 |
| Dearden/Birdsall | LU-24 |
| Curtice | LU-25 |
| Decant | LU-26 |
| Donovan - Wallace - Yoder - Standart | LU-27 |
| Coolie | LU-28 |

Critical Sewage Areas

Lucas County

| | |
|--------------------------------|-------|
| Erie View | LU-29 |
| Pavilion - Beach View – Temple | LU-30 |
| Northway | LU-31 |
| North – Allegan – Van Dyke | LU-32 |
| Rachel | LU-33 |

Critical Sewage Areas

Monroe County

| NAME | NUMBER |
|-----------------|--------|
| Erie | MO-01 |
| Lost Peninsula | MO-02 |
| McLeary's Point | MO-03 |
| Morin Point | MO-04 |
| State Road | MO-05 |
| South Dixie | MO-06 |
| Ottawa Lake | MO-07 |

Critical Sewage Areas

Ottawa County

| NAME | NUMBER |
|---|--------|
| Curtice | OT-01 |
| Williston | OT-02 |
| SR 19 S of Oak Harbor | OT-03 |
| Waterford Place | OT-04 |
| SR 19 N of Oak Harbor to Salem-Carroll Road | OT-05 |
| Behlman | OT-06 |
| Clay Twp Near Genoa | OT-07 |
| Clay Twp Near Genoa | OT-08 |
| South Bass Island | OT-09 |
| South Bass Island | OT-10 |
| Locust Point | OT-11 |
| Johnson's Island | OT-12 |
| SR 269 in Danbury Twp | OT-13 |
| Englebeck Road | OT-15 |
| Rocky Ridge | OT-16 |
| Erie Twp: SR 163 and Richey Road | OT-17 |
| Portage Twp south shore, sections 7, 8, and 9 | OT-18 |
| Middle Bass Island | OT-19 |
| Port Clinton Eastern Road | OT-21 |
| Lacarne | OT-22 |
| East Harbor Road | OT-24 |
| Toussaint River Association | OT-25 |

Critical Sewage Areas

Sandusky County

| NAME | NUMBER |
|------|--------|
|------|--------|

| Critical Sewage Areas | |
|------------------------------|-------|
| Sandusky County | |
| Toussaint Creek | SA-01 |
| Portage below S. Br | SA-02 |
| Portage below N. Br | SA-03 |
| Sugar Creek | SA-04 |
| Woodland Hts | SA-06 |
| Muncie Hollow | SA-08 |
| White's Landing | SA-09 |
| Wightman's Grove | SA-10 |
| Rambo Rd | SA-11 |
| Hessville | SA-12 |
| Vickery | SA-13 |
| Hayes/53 | SA-15 |
| Timpe / Twp Line / Cole | SA-16 |
| Green Cr Limerick Rd | SA-17 |
| Country Club Estates | SA-18 |
| Barkshire Hills | SA-19 |
| Wooded Acres Campgrounds | SA-20 |
| West State Street | SA-21 |
| Christina Drive | SA-22 |
| Four Mile House Road | SA-23 |
| Rodriguez Street | SA-24 |
| Millersville | SA-25 |

| Critical Sewage Areas | |
|------------------------------|---------------|
| Wood County | |
| NAME | NUMBER |
| Bays/ Bradner Road | WO-01 |
| West Millgrove | WO-02 |
| SR 64 N of King | WO-03 |
| King Road / RR | WO-04 |
| Stony Ridge | WO-08 |
| Bairdstown | WO-10 |
| Otsego along river | WO-11 |
| Dowling | WO-12 |
| Dunbridge | WO-13 |
| Sugar Ridge | WO-14 |
| Kramer/Huffman | WO-15 |
| Hammansburg | WO-16 |
| Curtice/Bradner | WO-17 |
| Five Point | WO-18 |
| Hatton | WO-19 |
| Johnson's Subdivision | WO-20 |
| Mermill | WO-21 |
| Maurer's MHP | WO-22 |
| J&T MHP | WO-23 |
| South Rudolph | WO-24 |

6. Agricultural Runoff

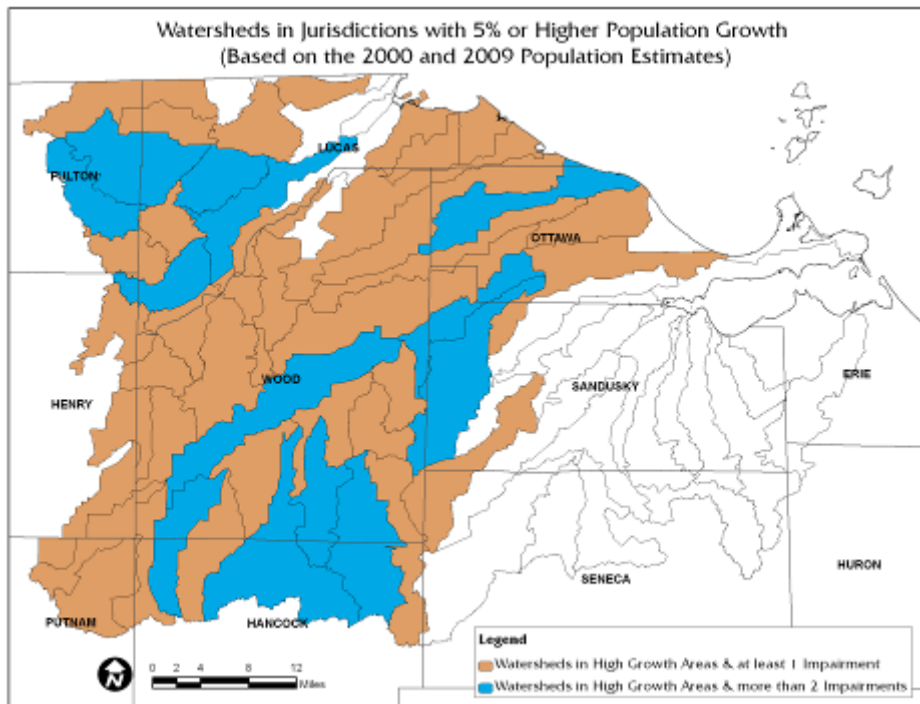
This chapter covers agricultural runoff issues. There are no proposed changes to this chapter.

7. Urban Runoff

This chapter covers urban runoff issues, particularly Stormwater NPDES permit requirements. This chapter is a substantial rewrite. It makes the following updates:

- Replaces many data tables with GIS maps, aiding understandability
- Updates population data to 2009, the latest estimates available
- Information about EPA stormwater permitting requirements and the “MS4” program have been updated throughout
- Incorporates water quality data and Ohio EPA’s assessments of watershed impairments
- Incorporates Green Infrastructure and Low Impact Development (LID) concepts
- Incorporates work done by the TMACOG Stormwater Coalition, including the Stormwater Management Standards Manual.
- Used environmental and census data to determine Critical Urbanizing Watersheds and generate maps

The chapter concludes with designation of Critical Urbanizing Watersheds. These are shown in the following figure. They are watersheds with water quality problems (impairments), and had population growth rates over 5% from 2000 to 2009.



Maps of the proposed revised Facility Planning Areas and Critical Sewage Areas are given on the next two pages.

TMACOG "208" Areawide Water Quality Management Plan Sanitary Sewerage Facility Planning Areas

June 2011

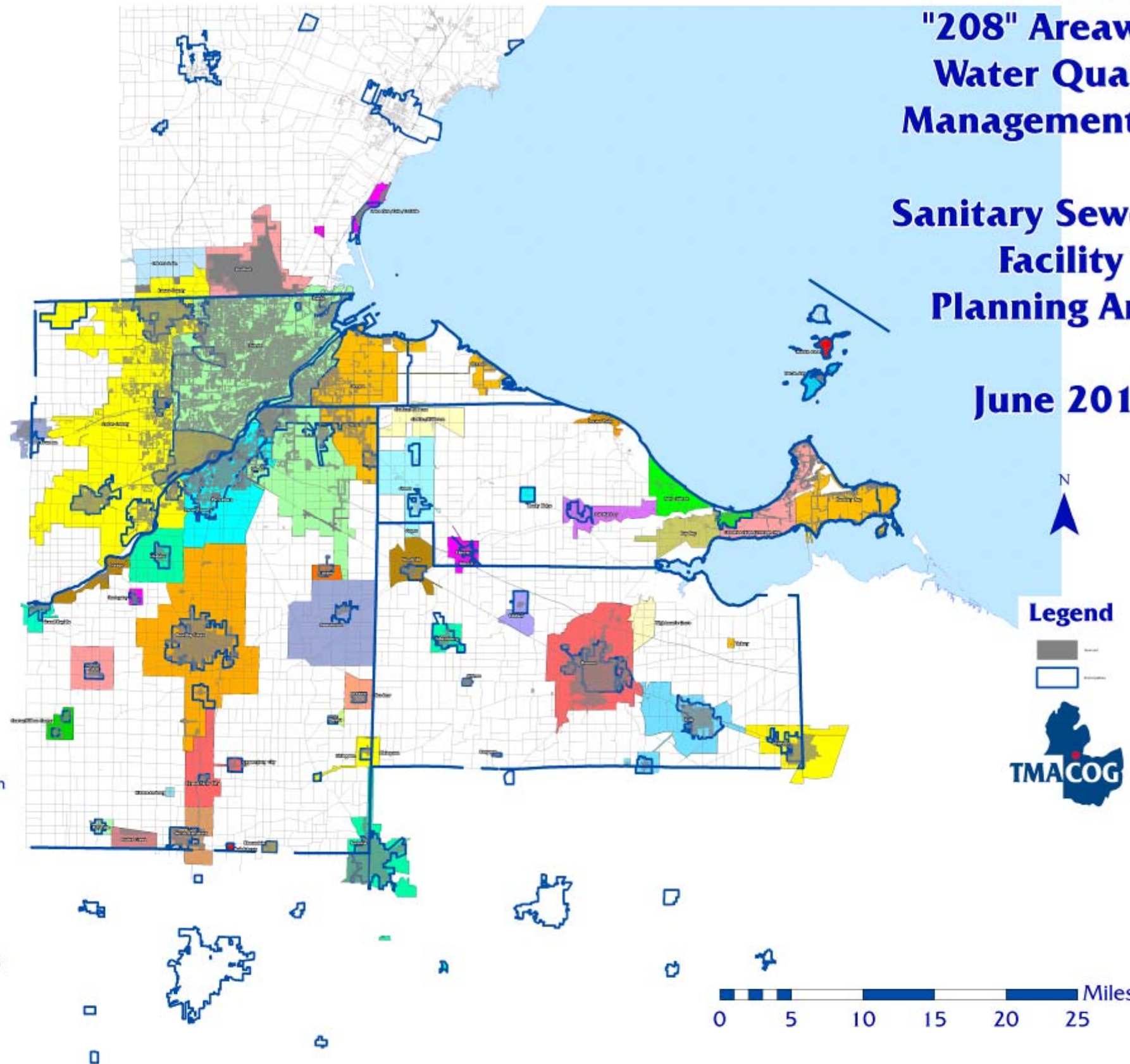
Colored Areas are individual Facility Planning Areas for public wastewater treatment. Each corresponds to an existing or planned wastewater facility.

Shaded areas are where public sanitary sewerage service is presently available.

TMACOG's designated "208" area covers Lucas, Ottawa, Sandusky, and Wood Counties of Ohio, and Bedford, Erie, and Whiteford Townships of Monroe County Michigan.

Bordering areas are recommendations to Ohio EPA. The balance of Monroe County Michigan is covered by SEMCOG's 208 Plan.

The entire TMACOG 208 Plan is available at <http://www.tmacog.org>



Critical Sewage Areas

June 2011

A Critical Sewage Area are areas with concentrations of failed onsite sewage systems, based on sampling results, complaints, suspected failures based on Health Department observations and best professional judgment.

They are recommended priority areas for system inspection and maintenance, replacement or repair, and/or installation of sewers. The 208 Plan supports funding for these actions.

