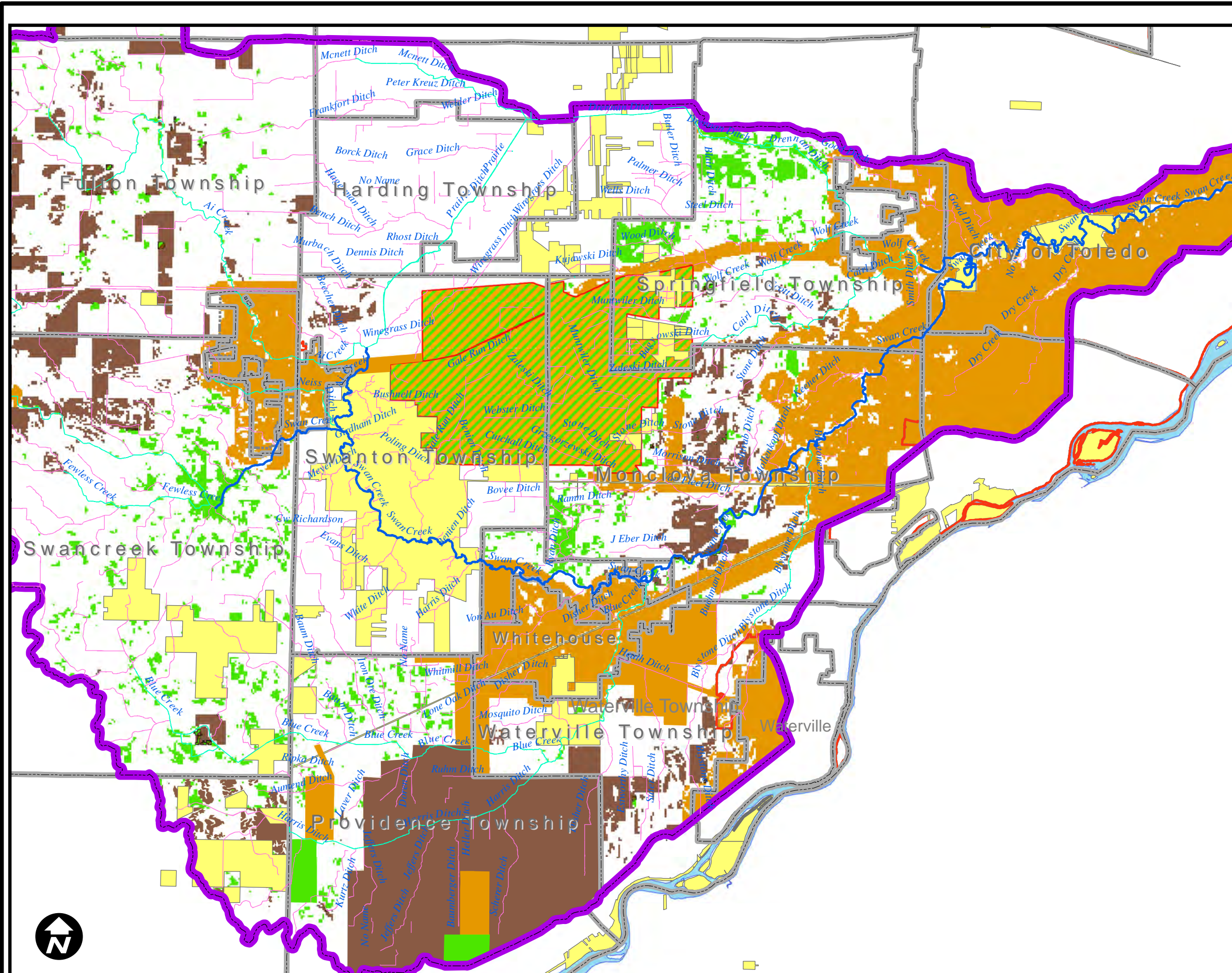


Lucas County Swan Creek Watershed Priority Areas

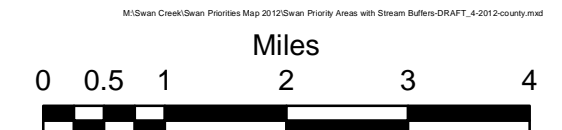
2013 Map Revision



Legend

Swan Streamside Buffers
Buffer Distance from Center (ft.)

- 30
- 40
- 100
- Swan Creek Watershed Boundary
- Perpetually Protected Conservation Areas
- Perpetually Protected Agricultural Areas
- Airport Oak Openings Area (AOOA)
- Agriculture
- Conservation
- Development
- No Priority



M:\Swan Creek\Swan Priorities Map 2012\Swan Priority Areas with Stream Buffers DRAFT_4-2012-county.mxd