

# Toledo Express Airport

**FLY TOLEDO EXPRESS AIRPORT**

*Cost. Comfort. Convenience. ➤ This is the way to go.*



# TOLEDO EXPRESS AIRPORT HISTORY



# TOLEDO EXPRESS AIRPORT HISTORY

- Airport was built and opened in 1955. It cost \$3,850,000 to build, and is the only commercial service airport in the country that was built without any federal aid!
- Owned by the City of Toledo and Operated by the Port Authority since 1974
- Toledo Express Airport celebrated its 50 Year Anniversary in 2005!

# Toledo Airports Economic Impact

- Toledo Express and Metcalf Field currently have 30 companies with business operations at the airports:
  - These 30 companies collectively provide over **2,750 jobs** at the airports generating an estimated annual total (direct, indirect and induced) payroll of approximately **\$196.1 Million** and expenditures in excess of **\$70 million!**

# Airport Financial Summary

- Port Authority Airport Division Annual Operating Budget \$7,263,000 (includes \$1.8 million in debt annually)
  - 100% Self-Sufficient
- Annual Operating Revenue \$7,468,000
  - \$205,000 Excess Revenue for Capital Improvements
- Planned 2006 Capital Improvements:
  - Runway Reconstruction – Metcalf Field \$2.1 Million
  - Taxiway Construction – Metcalf Field \$900,000
  - Phase I Terminal Reconfiguration - \$5.4 Million
  - South Airport Roadway & Utilities - \$6.0 Million

# Airport Division Financial Structure

- Fixed vs Variable Income
- \$5,738,500 or 78% of total revenue is variable
- Only 22% of total Airport Revenue is fixed

<u>DESCRIPTION</u>	2005 <u>BUDGET</u>
<u>SUMMARY</u>	
LANDING AREA	1,757,000
TERMINAL BUILDING & APRON	1,561,500
AIR CARGO - B.A.X	1,029,700
GROUND TRANSPORTATION	2,420,000
RENTAL INCOME	368,000
METCALF FIELD	45,000
ADMIN. / MISC.	131,735
TOTAL REVENUE	<hr/> 7,312,935 <hr/>

# Airport Division Financial Structure

- Airline (Passenger Driven) Revenue is the largest revenue source - \$4.4 Million (60% of Total):
  - Airline Revenue
    - Landing Fees \$ 580,000
    - Airline Rental Space \$1,050,000
    - Apron/Jetway Fees \$ 315,000
  - Concession (Passenger) Revenue
    - Parking Revenue \$1,600,000
    - Rental Car Revenue \$ 800,000
    - Food/Beverage Rev. \$ 60,000

# Airport Division Financial Structure

- Grant Funding and Passenger Facility Charges are the primary source for capital improvements at the airport
- Grant Funding
  - Combination of Entitlement Grants and Discretionary Grants
    - Entitlement Grant Funding is made up of:
      - Passenger Entitlement Grants
        - 2005 Passenger Entitlements for TEA = \$1,850,000
      - Cargo Entitlement Grants
        - 2005 Cargo Entitlement for TEA = \$800,000
- Passenger Facility Charges – \$4.50 Collected from Enplaning Passengers at the airport
  - Generate approximately \$800,000 annually
  - Can be used for terminal and airfield project approved by the airlines

# Problems

- Airport is too heavily dependent on passenger generated revenue – Over 60%
- Too much Variable Revenue – Over 78%
- How do we remedy the situation???
  - Generate more fixed revenue by development of the south side of the airport as industrial and warehouse/distribution
  - Develop cargo facilities to support more cargo aircraft operations

# Cargo/Industrial Business Development

The Toledo Express Business  
Park

# Toledo Express Business Park

- Envisioned as part of a Multi-modal business park to include:
  - Air
  - Highway 80/90 & I-75
  - Rail – One of the Nations busiest Rail Lines
- Currently developing targeted marketing materials for Cargo, Industrial and Warehousing/Distribution development
- Goal of 200,000 SF commitment in 2006

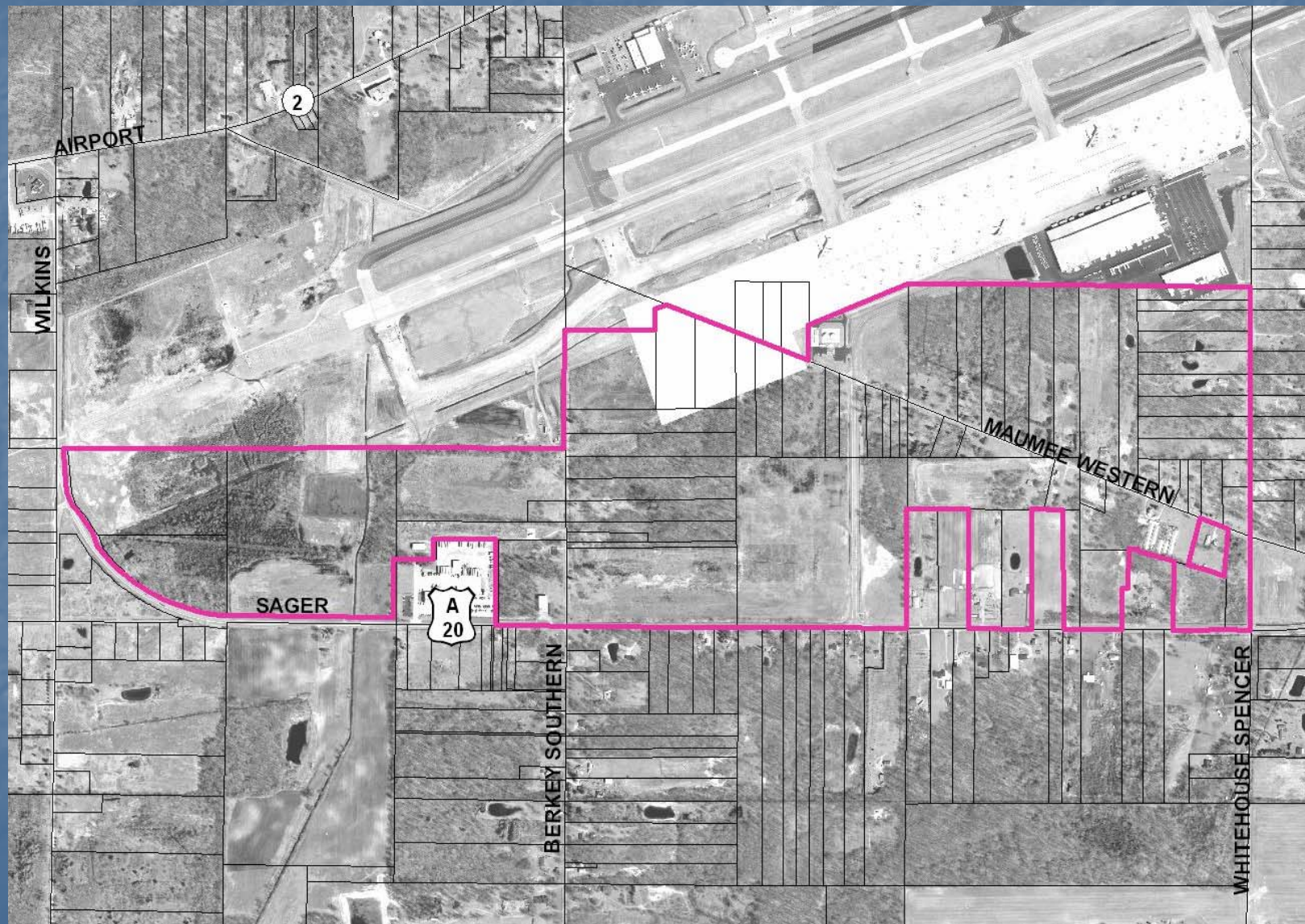
# Opportunities for the Toledo Express Business Park

- Located in the heart of the Great Lakes industrial corridor, in the second largest concentration of industrial space in the U.S.
  - 937 million square feet Detroit to Cleveland
- Located in the center of the largest concentration of industrial space in North America
  - 4 billion square feet within 300 miles
- Transportation infrastructure and support services
  - Highway – at the crossroads of I-75 and I-80
  - Rail – One of the busiest rail lines in the US crosses through Toledo
  - Air – BAX Global hub

# Infrastructure Improvements



# Toledo Express Business Park Area Rezoned to M1 Industrial



# Infrastructure Improvements

- Proudfoot & Associates has been retained to complete the design and bid documents for:
  - New Industrial Access Road
  - Improvements to Whitehouse-Spencer Road
  - New Water and Sewer lines
  - Vacation of Maumee-Western Road
  - Platting of new industrial lots
- Anticipate Design Completion by May 2006



- ⋯⋯⋯ Gas
- ⋯⋯⋯ Water/Sewer
- Road Construction

MAUMEE WESTERN

AIR CARGO

SAGER

10 ACRES

10 ACRES

10 ACRES

5 ACRES

10 ACRES

10 ACRES

5 ACRES

# Other Major Infrastructure Projects

- Extension of Runway 16-34
  - Currently 5,600'
  - Anticipate Master Plan recommending 2,400' extension to 8,000'
    - Will require relocation of US 20 A or tunnel under extended runway
    - Environmental Assessment
    - \$10 million to \$25 million project

# Other Major Infrastructure Projects

- Ohio Air National Guard 180<sup>th</sup> Fighter Wing
  - Taking on an additional mission of Military Alert Readiness – Will require additional on-base facilities and airfield infrastructure by 2010
  - Extended Runway 16-34 will be necessary to secure mission into the future

# Other Major Infrastructure Projects

- Air Traffic Control Tower
- CAT II Approach – NAVAID Replacement
- Phase II & III Terminal Reconfiguration and Modernization

THANK YOU!

QUESTIONS???

