

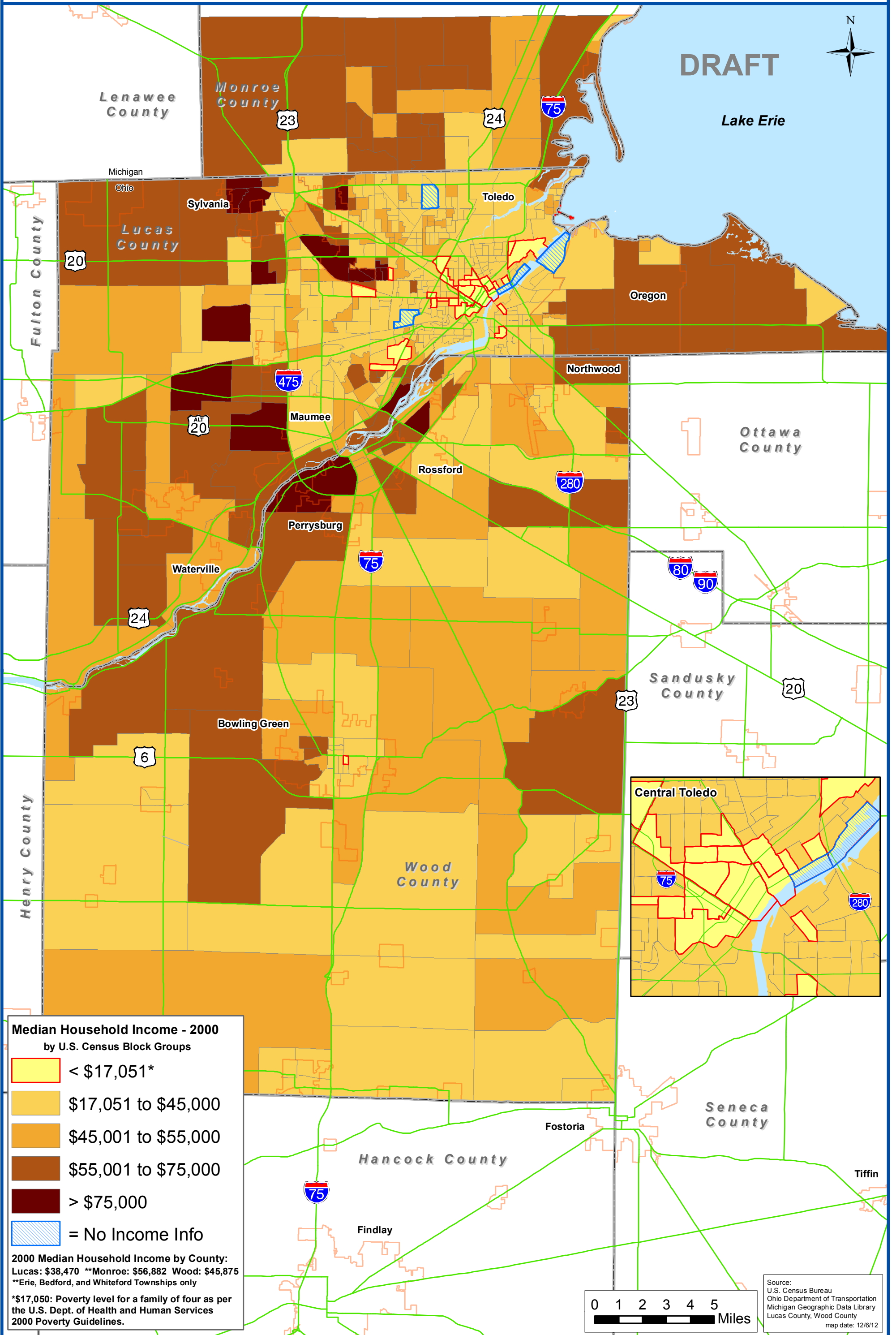
Median Household Income by Census Block Groups - 2000

Lucas, Wood, and Monroe (Erie, Bedford, Whiteford Twps) Counties



Toledo Metropolitan Area Council of Governments
 300 Martin Luther King, Jr. Drive, Suite 300
 Toledo, Ohio 43604 419-241-9155
 www.tmacog.org

DRAFT

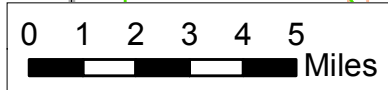


Median Household Income - 2000
 by U.S. Census Block Groups

- < \$17,051*
- \$17,051 to \$45,000
- \$45,001 to \$55,000
- \$55,001 to \$75,000
- > \$75,000
- = No Income Info

2000 Median Household Income by County:
 Lucas: \$38,470 **Monroe: \$56,882 Wood: \$45,875
 **Erie, Bedford, and Whiteford Townships only

*\$17,050: Poverty level for a family of four as per the U.S. Dept. of Health and Human Services 2000 Poverty Guidelines.



Source:
 U.S. Census Bureau
 Ohio Department of Transportation
 Michigan Geographic Data Library
 Lucas County, Wood County
 map date: 12/6/12