

# Estimating total coliform count

1. Identify grid spaces that represent the average and count the colonies in those spaces
2. The area of the petrifilm is approximately  $20\text{cm}^2$
3. Take your average and multiply by the area

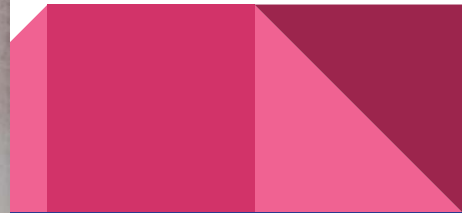
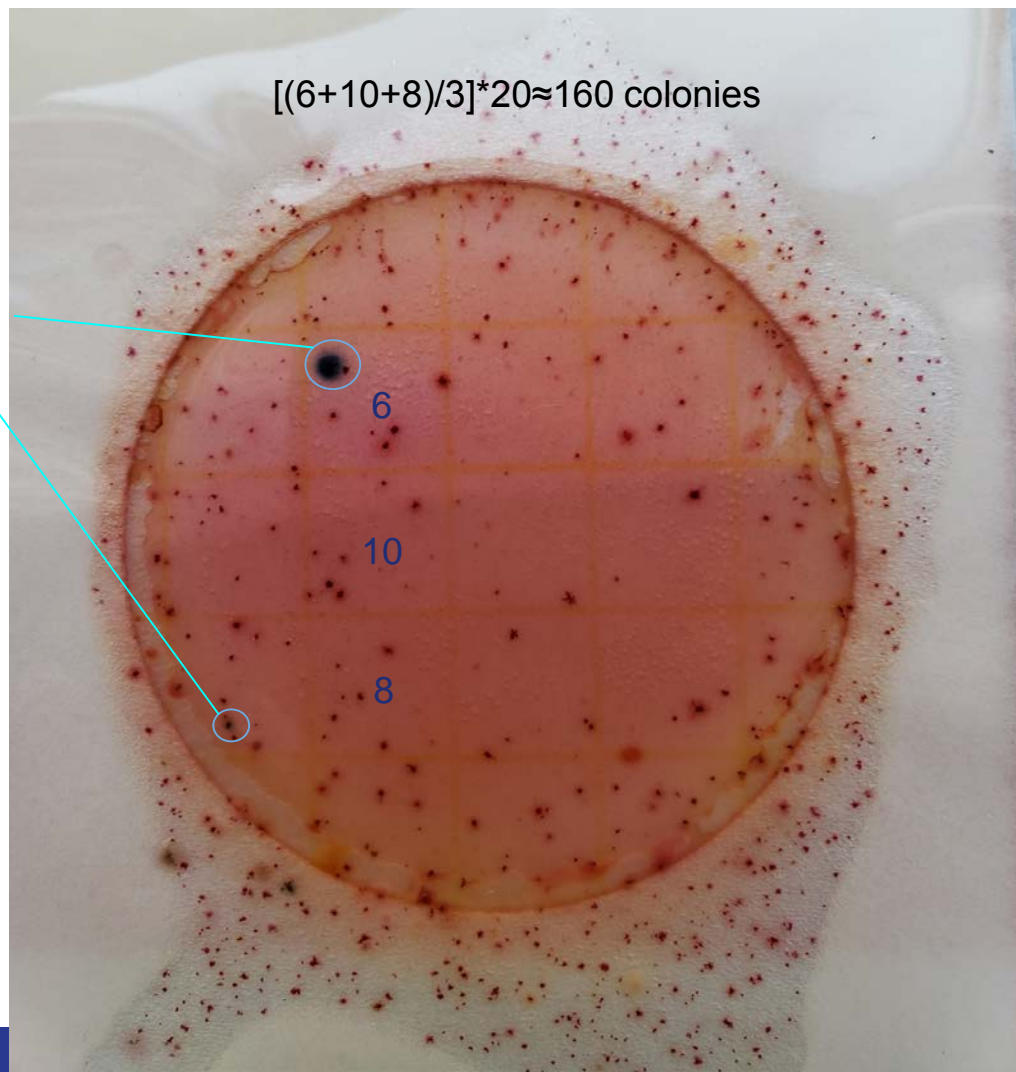
*NOTE: Only the area in the middle of the foam cut out should be used for counts*

1. You have estimated the number of colonies!

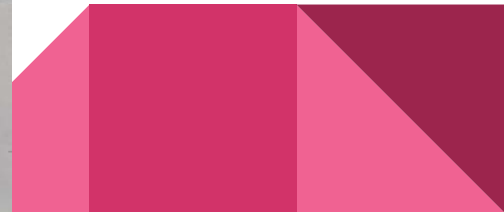
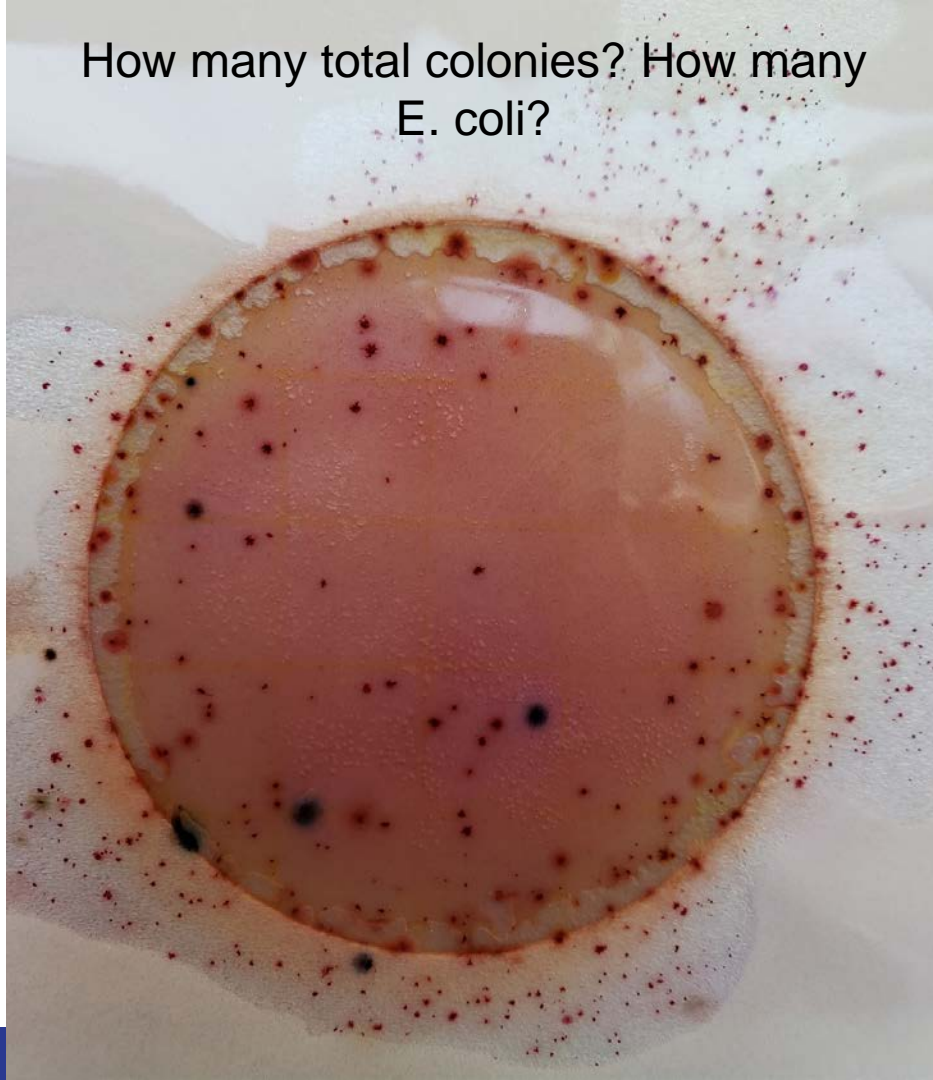


$$[(6+10+8)/3]*20 \approx 160 \text{ colonies}$$

Blue spots are E. coli  
Total E.coli colonies=2



How many total colonies? How many  
E. coli?



# More questions?

[http://www.tmacog.org/Environment/SWW\\_07/PetrifilmInterpretation.pdf](http://www.tmacog.org/Environment/SWW_07/PetrifilmInterpretation.pdf)

